

LENVIMA[®]가 치료 옵션이 될 수 있는지 의사에게 물어보십시오

LENVIMA는 경구용 약물로서, 간세포성암(HCC)이라는 간암을 수술로 제거할 수 없을 때 1차 치료제로 단독 사용됩니다.



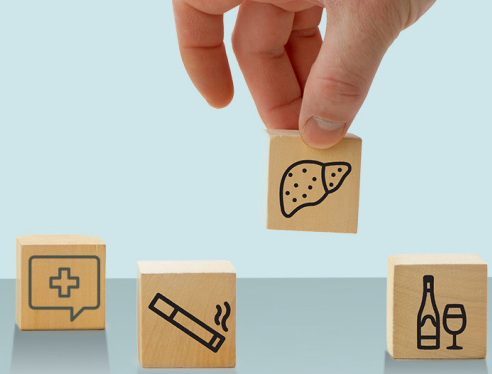
선별된 안전 정보

LENVIMA는 다음과 같은 심각한 부작용을 유발할 수 있습니다:

- **높은 혈압 (고혈압):** 고혈압은 LENVIMA의 일반적인 부작용이며 심각한 상태에 이를 수도 있습니다. LENVIMA 복용을 시작하기 전에 혈압조절이 선행되어야 합니다. 담당의사는 LENVIMA로 치료하는 동안 정기적으로 혈압을 확인해야 합니다. 혈압의 문제가 발생하는 경우, 담당의사는 고혈압을 치료하기 위해 약을 처방할 수도 있습니다

 **LENVIMA[®]**
(lenvatinib) capsules | 10 mg and 4 mg

간암 이해하기



간암의 위험요인



간세포성암, 또는 간단한 약자인 HCC 는 간암 중 가장 일반적인 유형의 간암으로 원발성 간암의 약 80% 를 차지합니다. 원발성 간암이란 간에서 시작되는 암을 말합니다. 간암 진단에 당황하고 난감스러운 것은 지극히 정상적입니다. 하지만 진행성 간암환자에게 도움이 될 수도 있는 약들이 있습니다.

치료 계획은 암의 진행단계와 환자 본인이 안고 있는 기타 건강 요인 및 간암의 근본적인 원인을 기반으로 합니다.

간암에는 일반적으로 두 가지 병기가 있습니다—조기와 진행된 단계.

- 조기 간암은 수술 또는 이식으로 치료될 수 있으며 완치의 가능성이 있습니다
- 진행된 병기 간암은 일반적으로 수술을 통해 치료가 가능하지 않습니다

수술로 암을 치료할 수 없는데는 몇 가지 이유가 있습니다:

- 암이 간 전체에 퍼진 경우
- 간에 있는 종양이 상당히 제거하기 어려운 곳에 있는 경우
- 환자가 수술을 받을 만큼 건강하지 못한 경우
- 환자가 수술을 거부하는 경우

진행성 간암의 경우에도 치료가 가능할 수도 있습니다. 치료 옵션에 대해 의사와 상의하십시오.



이 안내책자 전면에 걸쳐 담겨있는 선별된 안전 정보와 페이지 10-13 및 첨부된 투약 안내서의 전문을 참조하십시오.

어떤 사람들은 보통사람보다 특정 질병에 걸릴 확률이 더 높은 근본적인 원인을 가지고 있는데 이를 위험요인 이라고 합니다.

간암에는 여러 가지 잠재적인 위험요인이 있습니다. 흡연, 식습관, 생활방식의 선택과 같은 일부 위험요인은 관리가 가능하지만, 인종과 같은 요인은 조절이 불가능합니다. 오른쪽에 몇가지 가장 일반적인 간암의 위험요인이 열거되어 있지만, 모든 요인들이 포함되어 있지는 않습니다. 귀하와 가장 관련성이 높은 요인에 대해 담당의사와 상의해 보십시오.

B형 간염 바이러스 (HBV)

만성 B형 간염은 간에 염증과 손상을 주는 간경변으로 이어질 수 있습니다. 간경변 환자의 대다수가 간암에 걸리게 됩니다



당뇨병

아시아계 미국인은 진단되지 않은 당뇨병의 비율이 가장 높습니다 (50%). 당뇨병은 간암 위험을 증가시킬 수 있습니다

흡연

담배 흡연은 간암 발병을 현저히 증가시키는 것과 연관성이 있습니다

음주

과한 음주를 하는 사람은 간암의 발병률이 5배나 더 높습니다

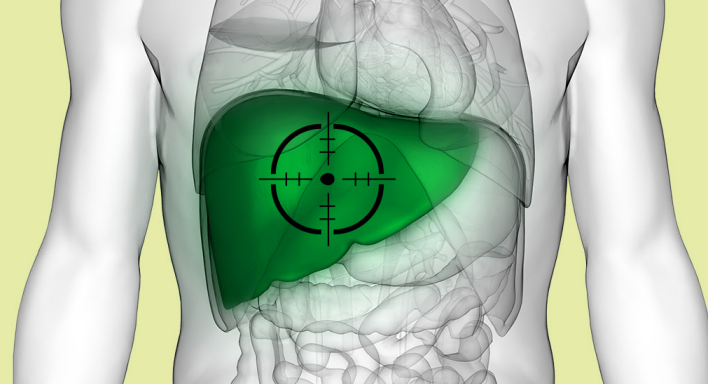
아플라톡신 노출

미국 내 일부 아시아 이민자는 아플라톡신이라는 독성물질에 노출이 문제가 되는 국가로부터 이주하였습니다. 아플라톡신은 땅콩, 곡물, 옥수수과 같은 작물 및 식물성 제품에서 자라는 곰팡이에 의해 발생하는 물질입니다

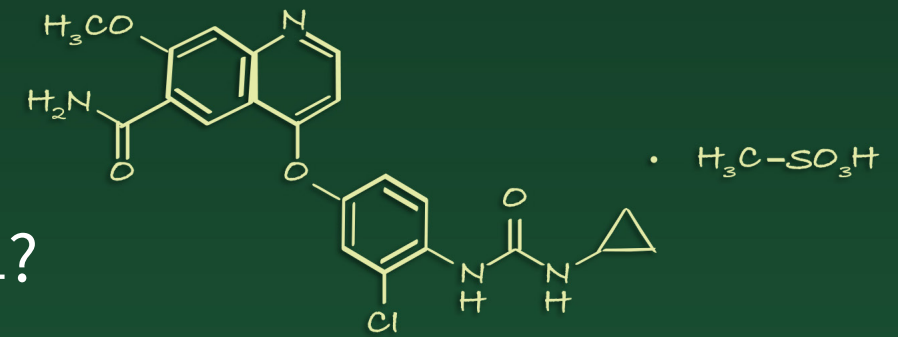
이러한 위험요인에 대한 자세한 정보를 원하시면 www.OurLenvima.com/risk-korean을 방문하십시오



LENVIMA란 무엇인가요?



LENVIMA는 어떻게 작용하나요?



LENVIMA가 수술로 제거할 수 없는 간세포성암을 치료하기 위해 처방된 경우, 다음 정보가 도움이 될 수 있습니다.

LENVIMA는 FDA 승인을 받은 1차 치료 처방약으로서 간세포성암을 수술로 제거할 수 없을 때 단독으로 사용됩니다



LENVIMA는 간세포성암 진단 후 수술로 제거가 불가능한 경우 의사가 처방하는 1차 치료제 중 하나입니다.

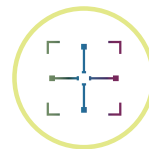
가정에서 하루에 한 번, 매일 복용하는 경구용 캡슐



LENVIMA 경구용 캡슐은 음식물 섭취와 관계없이 1일 1회, 매일 같은 시간에 복용합니다. 캡슐을 통째로 삼키는데 어려움이 있는 경우 물이나 주스에 녹여서 복용할 수도 있습니다.

LENVIMA가 어린이에게 안전하고 효과적인지는 알려진 바가 없습니다.

표적치료



LENVIMA는 화학요법이 아니며, 표적치료제로 알려진 약물입니다. 암세포의 성장과 증식을 유발하는 특정 단백질을 표적으로 작용하기 때문에 표적치료제라고 불립니다. 건강한 정상세포에도 이러한 단백질이 있기 때문에, LENVIMA는 일부 정상세포에도 영향을 미쳐서 심각한 부작용을 일으킬 수 있습니다.

LENVIMA는 종양이 인체 내에서 생존하고 자라는데 필요한 과정을 방해하는 것으로 여겨집니다.

이러한 작용은 인체 내의 두 곳에서 일어납니다:

세포

LENVIMA는 세포의 생존과 증식을 방해하는 것으로 여겨집니다.



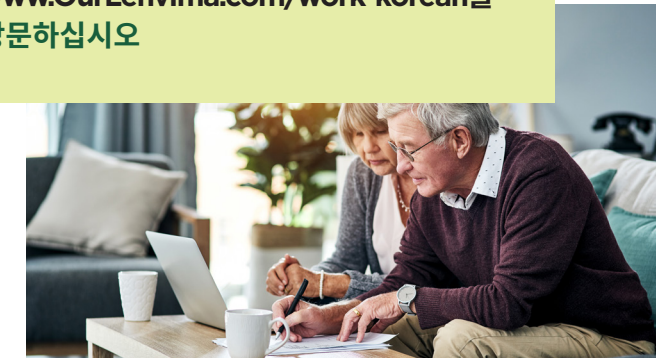
혈관

LENVIMA는 또한 혈관이 성장하는데 필요한 활동을 저해하는 것으로 생각됩니다. 혈관은 종양의 생존과 성장에 도움을 줍니다.



LENVIMA 작용기전에 대한 자세한 내용은 www.OurLenvima.com/work-korean을 방문하십시오

LENVIMA는 또한 건강한 정상세포에도 악영향을 미치고 결과적으로 심각한 부작용을 유발합니다.



선별된 안전 정보

LENVIMA는 다음과 같은 심각한 부작용을 일으킬 수 있습니다 (이전 페이지에서 계속):

- **심장 문제:** LENVIMA는 사망으로 이어질 수 있는 심각한 심장 문제를 초래할 수 있습니다. 호흡곤란, 또는 발목의 부종과 같은 심장 문제의 증상이 발생하는 경우 즉시 담당의사에게 연락하십시오
- **혈관(동맥)의 혈전성 문제:** 다음과 같은 증상이 하나라도 발생하면 즉시 응급의료 도움을 받으십시오; 심한 가슴 통증이나 압박감, 팔-목-등-목 또는 턱의 통증, 호흡 곤란, 신체 한쪽이 약해지거나 무감각한 느낌, 발음곤란 등 언어장애, 갑작스러운 심한 두통, 갑작스러운 시력 변화

이 안내책자 전면에 걸쳐 담겨있는 선별된 안전 정보와 페이지 10-13 및 첨부된 투약 안내서의 전문을 참조하십시오.

LENVIMA의 효과는 입증되었습니다.

LENVIMA는 수술이 불가능한 954명의 간세포암 환자들을 대상으로 한 임상시험으로 연구되었습니다. LENVIMA로 치료받은 환자 수는 478명, sorafenib으로 치료받은 환자 수는 476명이었습니다. 이 임상시험에서 환자들은 무작위로 LENVIMA 또는 대조약 sorafenib에 배정되었습니다. 그 결과, LENVIMA의 치료효과가 sorafenib에 비해 생존기간 연장 측면에서 열등하지 않은(비열등) 것으로 나타났습니다.

LENVIMA로 치료받은 환자의 **생존기간의 중앙값은 13.6개월**이었고, sorafenib으로 치료받은 환자는 12.3개월이었습니다. 생존기간의 중앙값은 최단 기간과 최장 기간의 중간치입니다. 절반의 환자들이 중앙값보다 더 긴 생존기간을 보였으며, 나머지 절반은 중앙값보다 더 짧은 생존기간을 보였습니다.

LENVIMA로 치료받은 환자들보다 sorafenib으로 치료받은 환자들보다 **암이 악화되지 않고 두 배나 더 오랫동안 생활했습니다**--sorafenib으로 치료받은 환자의 중앙값이 3.6개월인데 비해 LENVIMA로 치료받은 환자들의 중앙값은 7.3개월이었습니다.

중앙값은 가장 낮은 숫자에서 가장 높은 숫자로 나열된 숫자들 중의 중간 숫자입니다.



대조약 sorafenib로 치료받은 환자들의 중앙 크기 축소 비율(12%)에 비해 **LENVIMA로 치료받은 환자들의 중앙 크기 축소 비율(41%)이 약 3.5 배 더 높은 것으로 나타났습니다.** 질병의 징후를 전혀 보이지 않은 환자가 LENVIMA 시험군에서 10명(2.1%), sorafenib 대조군에서 4명(0.8%)이었으며, 질병의 일부 징후가 관찰된 환자는 LENVIMA 시험군에서 184명(38.5%), sorafenib 대조군에서 55명(11.6%)으로 나타났습니다.

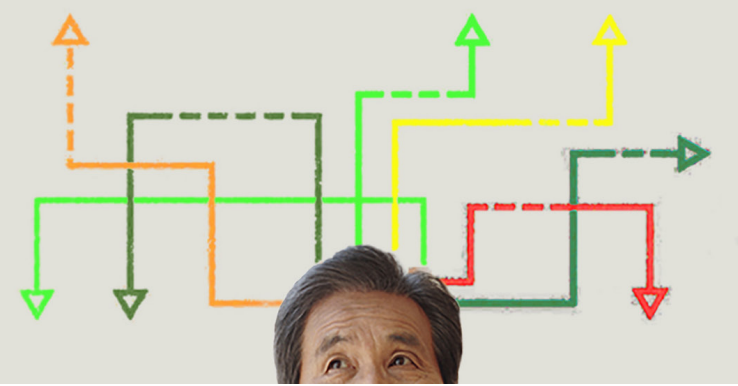


이 임상시험에서 LENVIMA가 수술이 불가능한 일부 간세포암 환자들을 위한 1차 치료제로서의 효과가 입증되었습니다.



이 안내책자 전면에 걸쳐 담겨있는 선별된 안전 정보와 페이지 10-13 및 첨부된 투약 안내서의 전문을 참조하십시오.

LENVIMA를 복용하기 전



LENVIMA를 복용하기 전에 의사와 상의하세요.

담당의사가 귀하에게 LENVIMA를 복용하도록 하는 경우, 먼저 의사와 상의해야 할 몇 가지 사항이 있습니다.



의사와 대화를 시작하는데 도움이 되는 질문.



- LENVIMA가 저에게 적합한 치료인지 어떻게 알 수 있습니까?
- LENVIMA는 어떻게 복용해야 합니까?
- 치료의 경과를 확인하기 위해 후속 방문은 언제 해야 합니까?
- LENVIMA 복용으로 인해 어떤 부작용이 발생할 수 있습니까?
- 부작용이 나타나면 언제 의사에게 이야기해야 합니까?

LENVIMA를 복용하기 전에:

- 현재 의학적 상태를 알리고 설명하십시오
- 임신 중이거나, 임신할 계획이거나, 임신할 가능성이 있는 경우 의사에게 알려십시오
- 복용중인 약초 보충제, 비타민 및 기타 약을 알려십시오
- 특히 골다공증 약을 복용 중이거나 복용한 경우 의사에게 알려십시오

선별된 안전 정보

LENVIMA는 다음과 같은 심각한 부작용을 일으킬 수 있습니다 (이전 페이지에서 계속):

- **간 문제:** LENVIMA는 간 부전과 사망으로 이어지는 간 문제를 일으킬 수 있습니다. 담당의사는 LENVIMA로 치료하기 전과 치료하는 기간 동안 간 기능을 확인할 것입니다. 다음과 같은 증상이 하나라도 나타나는 경우 즉시 담당의사에게 연락하십시오; 피부 또는 눈의 흰자위가 노랗게 변하는 황달, 어두운 색의 소변, 연한 색의 대변, 졸음증, 혼란이나 의식 상실

LENVIMA 복용하기



LENVIMA 치료의 효과를 최대화 하려면 캡슐을 올바르게 복용하고 보관하는 것이 중요합니다.

LENVIMA 캡슐을 담당의사가 처방한 그대로 정확하게 복용하십시오.



- 귀하의 의사가 LENVIMA의 복용량과 복용 시간을 알려줄 것입니다
- 이 약은 담당의사가 처방한 대로 정확하게 복용하는 것이 중요합니다
- 의사는 LENVIMA 치료 중에 용법 혹은 용량을 변경할 수 있습니다. 예를 들면:
 - 치료 중에 원래 처방된 LENVIMA 캡슐의 갯수를 줄일 수 있습니다
 - 일정 기간 동안 복용을 중단할 수 있습니다
 - 환자에게 특정 부작용이 발생하는 경우 복용을 완전히 중단할 수도 있습니다
- 의사는 환자의 체중에 따라 복용할 캡슐의 갯수를 결정하게 됩니다. 치료 시작 복용량은 하루에 4mg 캡슐 두세개로 시작할 수 있습니다. 몸무게가 60kg (132 파운드) 이상인 경우에는 하루에 LENVIMA 캡슐 3개, 체중이 60kg (132 파운드) 미만인 경우에는 하루에 LENVIMA 캡슐 2개가 처방될 수 있습니다

LENVIMA는 음식물 섭취와 관계없이 복용이 가능합니다.

LENVIMA는 음식물 섭취와 관계없이 복용할 수 있으므로 자신에게 가장 편리한 시간을 선택하여 복용하되, 매일 같은 시간에 복용해야 합니다.

LENVIMA 복용 방법에 대한 자세한 내용은 www.OurLenvima.com/take-korean을 방문하십시오

LENVIMA 캡슐을 통째로 삼키기 어려운 경우 다음과 같이 투여합니다?



1. 작은 용기나 경구투약용 주사기 (약 20mL 용량)에 일일 복용량을 최대 5개 캡슐까지 넣습니다
2. 3mL의 물 또는 사과 주스를 용기나 경구투약용 주사기에 넣습니다
3. 캡슐의 껍질 (외부 표면)이 완전히 녹을 때까지 10분간 기다린 다음, 캡슐이 다 녹을 때까지 혼합물을 3분간 젓거나 흔들어줍니다. 캡슐을 부수거나 조각내지 마십시오
4. 액체 혼합물을 마시거나 경구투약용 주사기를 사용하여 약물을 경구 투여합니다
5. 그런 후, 두 번째 주사기를 사용하여 용기나 주사기에 2mL의 물을 추가로 넣고 (물을 더 넣기 전에 첫 번째 주사기의 뚜껑을 닫아야 함) 젓거나 흔들어준 후 액체 혼합물을 투여합니다
6. 이 과정을 최소 1회 이상 반복하고 용기나 주사기에 LENVIMA 혼합물이 더 이상 남아 있지 않을 때까지 모든 약물을 복용했는지 확인하십시오

일일 복용량이 6개의 캡슐인 경우에는 한 번에 3개의 캡슐을 넣어서 위의 방법대로 투여하십시오.

LENVIMA 혼합물은 뚜껑을 닫은 용기에 넣어서 최대 24시간 까지 화씨 36°F ~ 46°F (섭씨 2°C ~ 8°C)의 냉장고에 보관할 수 있습니다. 24시간 이내에 사용하지 않은 혼합물은 남겨두지 말고 버리십시오.

위관 튜브를 사용하는 경우 다음과 같이 투여합니다



LENVIMA는 최소 직경 5 프렌치 (폴리염화 비닐 또는 폴리우레탄 재질) 및 최소 직경 6 프렌치의 (실리콘 재질) 위관 튜브로 투여합니다.

1. 주사기 (20mL 용량)에 일일 복용량을 최대 5개 캡슐까지 넣어줍니다
2. 3mL의 물을 주사기에 넣고 캡슐의 껍질 (외부 표면)이 완전히 녹을 때까지 10분간 기다린 다음, 캡슐이 다 녹을 때까지 혼합물을 3분간 젓거나 흔들어줍니다. 캡슐을 부수거나 조각내지 마십시오
3. 위관 튜브를 통해 혼합물을 투여합니다
4. 그런 후, 주사기 뚜껑을 덮고 주사기 플런저를 제거합니다. 두 번째 주사기를 사용하여 추가로 2mL의 액체를 주사기에 넣어 젓거나 흔들어준 후 혼합물을 위관 튜브로 투여합니다. 이 과정을 최소 1회 이상 반복하고 주사기에 LENVIMA 혼합물이 더 이상 남아 있지 않을 때까지 모든 약물을 복용했는지 확인하십시오

일일 복용량이 6개의 캡슐인 경우에는 한 번에 3개의 캡슐을 넣고 위의 방법대로 투여하십시오

LENVIMA 혼합물은 뚜껑을 닫은 용기에 넣어서 최대 24시간 까지 화씨 36°F ~ 46°F (섭씨 2°C ~ 8°C)의 냉장고에 보관할 수 있습니다. 24시간 이내에 사용하지 않은 혼합물은 남겨두지 말고 버리십시오

LENVIMA는 하루에 한 번, 매일? 같은 시간에 복용해야 합니다.



하루에 한 번, 매일 같은 시간에 의사가 처방한 LENVIMA 용량을 복용하도록 미리 알림을 설정해 두십시오. 예를 들어, 매일 아침 일어나자마자, 또는 매일 저녁 잠자리에 들기 전에 LENVIMA 캡슐을 복용할 수 있습니다. 중요한 것은 의사가 처방을 바꾸기 전에는 매일 같은 시간에 복용하는 것입니다.

복용을 놓친 경우에는?

- LENVIMA복용을 놓친지 12시간 미만인 경우, 생각난 즉시 복용하십시오
- 그러나, 복용을 놓친지 12시간 이상인 경우에는, 복용을 생략하고 다음 투약시간에 복용하십시오

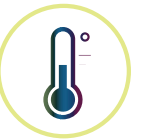
LENVIMA를 정해진 복용량 이상으로 복용한 경우에는?



LENVIMA를 정해진 복용량 이상으로 복용한 경우에는 다음의 조치를 취하십시오:

- 즉시 담당의사에게 연락하거나 또는
- 즉시 가까운 응급실로 가십시오

LENVIMA는 어떻게 보관해야 합니까?



LENVIMA(및 모든 의약품)를 어린이의 손이 닿지 않는 안전한 곳에 두는 것이 중요합니다. 화씨 68°F-77°F (섭씨 20°C-25°C) 의 일정한 실온에 보관하는 것이 가장 좋습니다.

의사가 처방한 용법과 용량 이외의 다른 방법으로 LENVIMA를 사용하지 마십시오.

의사가 처방하지 않은 질병에 대해서는 LENVIMA를 사용하지 마십시오. 귀하와 동일한 증상을 겪고 있다 해도 LENVIMA를 다른 사람에게 주지 마십시오. 유해할 수 있습니다. LENVIMA에 대한 추가 정보를 원하시면 담당의사 또는 약사에게 문의하십시오.

이 안내책자 전면에 걸쳐 담겨있는 선별된 안전 정보와 페이지 10-13 및 첨부된 투약 안내서의 전문을 참조하십시오.

치료 부작용 관리하기

LENVIMA를 복용하면 부작용이 발생할 수 있으며, 경우에 따라 심각한 상태에 이를 수도 있습니다.

LENVIMA의 부작용에 대처할 수 있는 방법이 있으며, 귀하의 의사가 가장 적절한 방법을 결정하는데 도움을 줄 수 있습니다. LENVIMA 치료와의 관련 여부에 상관없이, 치료중에 발생하는 모든 신체적 변화에 대해 의사에게 알리는 것이 중요합니다.

심각한 부작용

LENVIMA는 암세포들에게 작용하지만 몸의 정상 세포들에게도 영향을 미칠 수 있다고 여겨지며, 이것은 심각한 부작용으로 나타날 수 있습니다. 다음과 같은 증상이 하나라도 나타나거나 악화되면 즉시 의사에게 연락하거나 진료를 받으십시오:

고혈압

LENVIMA의 일반적인 부작용이며 심각한 상태에 이를 수도 있습니다.

- LENVIMA 복용을 시작하기 전에 혈압조절이 선행되어야 합니다
- 귀하의 의사는 LENVIMA로 치료하는 동안 정기적으로 혈압을 확인해야 합니다. 혈압의 문제가 발생하는 경우, 담당의사는 고혈압을 치료하기 위해 약을 처방할 수도 있습니다

심장 문제

LENVIMA는 사망으로 이어질 수도 있는 심각한 심장 문제를 초래할 수 있습니다. 다음과 같은 심장이상 증상이 발생하는 경우 즉시 담당 의사에게 연락하십시오:

- 호흡 곤란
- 발목의 부종

동맥 혈전성 문제

다음과 같은 증상이 하나라도 발생하면 즉시 응급의료 도움을 받으십시오:

- 심한 가슴 통증 또는 압박감
- 팔, 등, 목 또는 턱의 통증
- 호흡 곤란
- 신체 한쪽이 약해지거나 무감각한 느낌
- 발음곤란 등 언어장애
- 갑작스러운 심한 두통
- 갑작스러운 시력 변화

이 안내책자 전면에 걸쳐 담겨있는 선별된 안전 정보와 페이지 10-13 및 첨부된 투약 안내서의 전문을 참조하십시오.

간 문제

LENVIMA는 간 부전과 사망으로 이어질 수 있는 간 문제를 일으킬 수 있습니다.

- 귀하의 의사는 LENVIMA로 치료하기 전과 치료하는 기간 동안 간 기능을 확인할 것입니다
- 다음과 같은 증상이 하나라도 나타나는 경우 즉시 담당의사에게 연락하십시오:
 - 피부 또는 눈의 흰자위가 노랗게 변하는 황달
 - 어두운 색의 소변
 - 연한 색의 대변
 - 졸음증, 혼란이나 의식 상실

간 문제

LENVIMA 치료 기간 동안 사망으로 이어질 수 있는 신부전이 발생한 사례가 있습니다.

- 귀하의 의사는 정기적인 혈액 검사를 통해 신장의 상태를 확인해야 합니다

소변의 단백질 증가 (단백뇨)

단백뇨는 LENVIMA의 일반적인 부작용이며 심각한 상태에 이를 수도 있습니다. 단백질은 소변에 단백질이 증가하는 것을 말합니다.

- 귀하의 의사는 LENVIMA로 치료하기 전과 치료 중에 소변검사를 통해 단백뇨를 확인해야 합니다

설사

설사는 LENVIMA의 일반적인 부작용이며 심각한 상태에 이를 수도 있습니다.

- 설사가 발생하면 설사 치료를 위해 어떤 약을 복용할 수 있는지 의사에게 문의하십시오
- 설사를 하면 물을 더 많이 마셔서 수분을 공급하는 것이 중요합니다
- 충분한 수분을 섭취할 수 없고 설사가 멈추지 않는 경우 담당의사에게 알려거나 응급실로 가십시오

위 또는 소장의 구멍 (천공) 또는 두 개 이상의 장기 사이의 비정상적인 연결 (누공)

- 심한 위장 통증 (복부 통증)이 있는 경우 즉시 응급의료 도움을 받으십시오

심장의 전기적 활동의 변화 (QT 연장)

QT 연장은 생명을 위협할 수 있는 불규칙한 심장 박동을 유발할 수 있습니다.

- 귀하의 의사는 LENVIMA로 치료하기 전과 치료 중에 혈액 검사를 실시하여 혈중 칼륨, 마그네슘 및 칼슘 수치를 확인할 것이며, ECG로 심장의 전기적 활동을 확인할 수도 있습니다





LENVIMA는 다음과 같은 심각한 부작용을 일으킬 수 있습니다 (이전 페이지에서 계속):

낮은 혈중 칼슘 수치 (저 칼슘혈증)

- 귀하의 의사는 LENVIMA로 치료하는 동안 혈중 칼슘 수치를 확인할 것입니다
- 칼슘 수치가 낮은 경우, 의사는 칼슘 보충제의 복용을 권고할 수도 있습니다

가역적 후백질 뇌병증 증후군 (RPLS)

다음과 같은 증상이 발생하면 즉시 담당의사에게 연락하십시오:

- 심한 두통
- 발작
- 무력증
- 혼란
- 실명 또는 시력 변화

출혈

LENVIMA는 사망으로 이어질 수 있는 심각한 출혈 문제를 일으킬 수 있습니다.

LENVIMA로 치료하는 동안 다음과 같은 출혈의 징후나 증상이 있는 경우 담당의사에게 연락하십시오:

- 심하고 지속되는 코피
- 토혈
- 혈변 또는 흑변 (검고 반질거리는 듯한 변)
- 혈뇨
- 객혈 또는 핏덩어리가 나오는 기침
- 심한 질 출혈 또는 새롭게 시작되는 질 출혈

갑상선 호르몬 수치 변화

- 귀하의 의사는 LENVIMA로 치료를 시작하기 전과 치료 중 매달 갑상선 호르몬 수치를 확인해야 합니다

상처 회복 문제

LENVIMA를 복용하는 일부 환자에서 상처 회복 문제가 발생한 바가 있었습니다.

- LENVIMA로 치료하기 전이나 치료 중에 수술을 받을 계획이 있다면 귀하의 의사에게 알려주세요
- 예정된 수술일로부터 최소한 1 주 전에는 LENVIMA 복용을 중단해야 합니다
- 담당의사가 수술 후 언제부터 LENVIMA를 재복용 할 수 있는지 알려줄 것입니다

심각한 턱뼈 문제 (또는 골괴사)

LENVIMA를 복용하는 일부 환자에서 심한 턱뼈 이상이 발생한 바가 있었습니다.

- 턱뼈 문제 가능성을 높일 수 있는 위험요인은 다음과 같은 것이 있습니다:
 - 비스포스포네이트 (bisphosphonate) 또는 데노수맙(denosumab) 약제 복용
 - 치아질환
 - 침습적 치과치료
- 담당의사가 LENVIMA 치료를 시작하기 전과 치료기간 동안 구강검사를 하는 것이 권장됩니다. 치과 의사에게 LENVIMA를 복용 중인 사실을 말하고, LENVIMA를 복용하는 동안 구강 관리를 잘 하는 것이 중요합니다

이 안내책자 전면에 걸쳐 담겨있는 선별된 안전 정보와 페이지 10-13 및 첨부된 투약 안내서의 전문을 참조하십시오.

● 즉시 담당의사에게 알려주세요:

- LENVIMA치료를 받는 동안 턱뼈 통증, 치통, 잇몸 통증 등을 포함한 턱뼈 이상의 증상이나 징후가 나타나는 경우
- LENVIMA 치료 전이나 치료기간 동안 치아시술 계획이 있는 경우. 치아수술이나 침습적 치과치료 계획이 있는 경우, 수술 또는시술 날짜로부터 최소한 1주일 전에는 LENVIMA의 복용을 중단해야 합니다. 담당의사가 언제 다시 LENVIMA를 복용할 수 있는지 알려줄 것입니다. LENVIMA 치료기간 동안 가능하면 침습적 치과치료를 피하는 것이 좋습니다. 침습적 치과치료를 받기 이전에 비스포스포네이트 (bisphosphonate) 약제 복용을 중단하는 것이 턱뼈 이상의 위험을 낮추는데 도움이 될 수도 있습니다

일반적인 부작용

간암 치료를 받는 사람들에게 나타나는 LENVIMA의 가장 흔한 부작용은 **피로, 식욕 감소, 관절통 및 근육통, 체중 감소, 위장 (복부) 통증, 발진, 발적, 가려움 또는 손-발바닥 피부 박탈, 쉼 목소리, 출혈, 갑상선 호르몬 수치 변화 및 메스꺼움**을 포함합니다.

LENVIMA는 남성과 여성에게 불임 문제를 일으킬 수 있으며 태아에게 해를 끼칠 수 있습니다.

다음과 같은 경우 담당의사에게 알려주세요:

- 임신 또는 임신 계획이 있는 경우. 가임기 여성의 경우 담당의사는 LENVIMA로 치료를 시작하기 전에 임신 검사를 해야 합니다. LENVIMA로 치료받는 동안과 마지막 LENVIMA 복용 후 30일 동안에는 효과적인 피임 방법을 사용하십시오

- 모유 수유 중이거나 모유 수유 계획이 있는 경우. LENVIMA가 모유를 통해 전달되는지는 밝혀지지 않았습니다. LENVIMA치료기간 동안과 마지막 LENVIMA복용 후 1 주 동안은 모유 수유를 하지 마십시오

담당의사가 LENVIMA의 복용량을 줄이거나, 특정 부작용이 있는 경우 치료를 연기하거나 완전히 중단해야 할 수 있습니다.

이러한 것들이 LENVIMA의 부작용의 전부는 아닙니다. 부작용에 대한 의학적 조언에 대해서는 담당의사에게 연락 하십시오. 부작용에 대하여 FDA에 1-800-FDA-1088로 전화하거나 www.fda.gov/medwatch를 방문하여 보고할 수 있습니다.

일반적인 부작용 증상 관리

LENVIMA를 복용할 때 가장 흔히 나타나는 증상들에 대해 귀하와 의사가 대처할 수 있는 방법이 있습니다. LENVIMA를 복용하는 동안 부작용이 나타나거나 부작용이 악화되면 즉시 담당의사에게 연락하는 것이 중요합니다.

이러한 부작용 증상 관리에 대한 자세한 내용과 제안 사항을 보려면 www.OurLenvima.com/side-korean을 방문하십시오



LENVIMA에 대한 재정지원



LENVIMA 구입하기



실제 캡슐 크기가 아님

귀하와 담당의사가 LENVIMA가 귀하에게 적합한 치료약이라고 결정한 경우 Eisai가 도움을 드릴 수 있습니다.

다음과 같은 요건을 갖춘 환자는 지원을 받으실 수 있습니다:



- 무보험 환자
- 처방약 지불이 어려운 환자
- 보험 공동부담금 또는 코페이 지불이 어려운 환자

Eisai 지원 프로그램

- 귀하의 보험혜택이 어떻게 치료에 적용되는지 알려드립니다*
- 치료비에 대한 환자의 부담금을 보다 자세히 알려드립니다
- 치료약을 지불할 수 없는 경우, 지원을 받을 수 있는 요건을 충족하는지 확인해 드립니다

*Eisai는 청구된 금액에 대한 지급을 보장하지 않습니다. 질병 및 치료 분류, 보험 적용범위, 보험환급 등은 보험사, 보험플랜, 가입자, 의료서비스 내역에 따라 큰 차이가 있을 수 있습니다. 실제 보험적용 및 보험환급은 청구가 접수된 후 개별 보험사의 정책에 따라 결정됩니다. 질병 및 치료 분류, 환급, 적용범위 요건 등 보다 자세한 내용에 대해서는 해당 보험사에 문의할 수 있습니다. 보험환급에 있어서 적합한 질병 및 치료 코드와 함께 정확한 청구 내용을 보고할 의무는 전적으로 의료 제공자에게 있습니다. 모든 의료서비스는 의학적으로 타당하게 시행되어야 하며, 환자 의료기록으로 적절히 뒷받침 되어야 합니다.



전화번호: 1-866-61-EISAI (1-866-613-4724)
팩스번호: 1-855-246-5192
업무시간: 월~금, 오전 8시 ~ 오후 8시 (동부시간)
www.LenvimaReimbursement.com

아래 링크는 영어 전용 웹사이트로 연결됨을 참고하십시오. 아래 연락처에는 영어로 문의가 가능합니다. 한국어로 도움이 필요한 경우 통역 서비스를 요청할 수 있습니다.



이 안내책자 전면에 걸쳐 담겨있는 선별된 안전 정보와 페이지 10-13 및 첨부된 투약 안내서의 전문을 참조하십시오.

다음과 같은 곳에서 LENVIMA를 구입할 수 있습니다:

- 특정 특수약 전문약국
- 선별된 개인병원 및 진료소
- 선별된 종합병원의 구내약국

특수약 전문약국

- LENVIMA는 약을 환자에게 직접 우편으로 보내는 특정 특수약 전문약국을 통해 구입할 수 있습니다. LENVIMA를 조제하는 우편주문 특수약 전문약국의 전체 목록을 보려면 **www.LenvimaSpecialtyPharmacy.com**을 방문하십시오

개인병원/진료소 또는 종합병원의 구내약국

- LENVIMA는 일부 개인병원, 진료소, 종합병원의 구내약국을 통해서도 구입할 수 있습니다. 자격 요건과 자세한 내용은 선호하는 약국에 문의하십시오



LENVIMA 구입하는 방법에 대한 자세한 내용은 **www.OurLenvima.com/access-korean**을 방문하십시오

여러 특수약 전문약국에는 한국어가 가능한 직원이 있을 수도 있습니다. 영어권 담당자에게 통역에 대해 문의해 보십시오.





www.OurLenvima.com/korean
에서 자세히 알아보십시오

처방약의 부작용을 FDA에 보고하기를 권합니다.
www.fda.gov/medwatch를 방문하거나 1-800-FDA-1088로 전화하십시오.

KOREAN

이 안내책자 전면에 걸쳐 담겨있는 선별된 안전 정보와 페이지 10-13 및 첨부된 투약 안내서의 전문을 참조하십시오.



LENVIMA®는 Eisai R & D Management Co., Ltd.의 라이선스 하에 사용되는 Eisai Inc.의 등록 상표입니다.
© 2023 Eisai Inc. 모든 저작권 보유. 2023년 3월 LENV-US9175



HIGHLIGHTS OF PRESCRIBING INFORMATION

These highlights do not include all the information needed to use LENVIMA safely and effectively. See full prescribing information for LENVIMA.

LENVIMA® (lenvatinib) capsules, for oral use
Initial U.S. Approval: 2015

RECENT MAJOR CHANGES

Indications and Usage (1.4)	08/2022
Dosage and Administration (2.1)	08/2022
Dosage and Administration (2.10)	11/2022

INDICATIONS AND USAGE

LENVIMA is a kinase inhibitor that is indicated:

Differentiated Thyroid Cancer (DTC)

- For the treatment of patients with locally recurrent or metastatic, progressive, radioactive iodine-refractory differentiated thyroid cancer (DTC). (1.1)

Renal Cell Carcinoma (RCC)

- In combination with pembrolizumab, for the first line treatment of adult patients with advanced renal cell carcinoma (RCC). (1.2)
- In combination with everolimus, for the treatment of adult patients with advanced renal cell carcinoma (RCC) following one prior anti-angiogenic therapy. (1.2)

Hepatocellular Carcinoma (HCC)

- For the first-line treatment of patients with unresectable hepatocellular carcinoma (HCC). (1.3)

Endometrial Carcinoma (EC)

- In combination with pembrolizumab, for the treatment of patients with advanced endometrial carcinoma (EC) that is mismatch repair proficient (pMMR), as determined by an FDA-approved test, or not microsatellite instability-high (MSI-H), who have disease progression following prior systemic therapy in any setting and are not candidates for curative surgery or radiation. (1.4, 2.1)

DOSAGE AND ADMINISTRATION

Single Agent Therapy:

- DTC: The recommended dosage is 24 mg orally once daily. (2.3)
- HCC: The recommended dosage is based on actual body weight: 12 mg orally once daily for patients greater than or equal to 60 kg or 8 mg orally once daily for patients less than 60 kg. (2.5)

Combination Therapy:

- EC: The recommended dosage is 20 mg orally once daily in combination with pembrolizumab 200 mg administered as an intravenous infusion over 30 minutes every 3 weeks. (2.6)
- RCC: The recommended dosage is:
 - 20 mg orally once daily with pembrolizumab 200 mg administered as an intravenous infusion over 30 minutes every 3 weeks. (2.4)
 - 18 mg orally once daily with everolimus 5 mg orally once daily. (2.4)

Modify the recommended daily dose for certain patients with renal or hepatic impairment. (2.8, 2.9)

DOSAGE FORMS AND STRENGTHS

Capsules: 4 mg and 10 mg. (3)

CONTRAINDICATIONS

None. (4)

WARNINGS AND PRECAUTIONS

- Hypertension:** Control blood pressure prior to treatment and monitor during treatment. Withhold for Grade 3 hypertension despite optimal antihypertensive therapy. Discontinue for Grade 4 hypertension. (2.7, 5.1)
- Cardiac Dysfunction:** Monitor for clinical symptoms or signs of cardiac dysfunction. Withhold or discontinue for Grade 3 cardiac dysfunction. Discontinue for Grade 4 cardiac dysfunction. (2.7, 5.2)
- Arterial Thromboembolic Events:** Discontinue following an arterial thromboembolic event. (2.7, 5.3)
- Hepatotoxicity:** Monitor liver function prior to treatment and periodically during treatment. Withhold or discontinue for Grade 3 or 4 hepatotoxicity. Discontinue for hepatic failure. (2.7, 5.4)
- Renal Failure or Impairment:** Withhold or discontinue for Grade 3 or 4 renal failure or impairment. (2.7, 5.5)

- Proteinuria:** Monitor for proteinuria prior to treatment and periodically during treatment. Withhold for 2 or more grams of proteinuria per 24 hours. Discontinue for nephrotic syndrome. (2.7, 5.6)
- Diarrhea:** May be severe and recurrent. Promptly initiate management for severe diarrhea. Withhold or discontinue based on severity. (2.7, 5.7)
- Fistula Formation and Gastrointestinal Perforation:** Discontinue in patients who develop Grade 3 or 4 fistula or any Grade gastrointestinal perforation. (2.7, 5.8)
- QT Interval Prolongation:** Monitor and correct electrolyte abnormalities. Withhold for QT interval greater than 500 ms or for 60 ms or greater increase in baseline QT interval. (2.7, 5.9)
- Hypocalcemia:** Monitor blood calcium levels at least monthly and replace calcium as necessary. Withhold or discontinue based on severity. (2.7, 5.10)
- Reversible Posterior Leukoencephalopathy Syndrome (RPLS):** Withhold for RPLS until fully resolved or discontinue. (2.7, 5.11)
- Hemorrhagic Events:** Withhold or discontinue based on severity. (2.7, 5.12)
- Impairment of Thyroid Stimulating Hormone Suppression/Thyroid Dysfunction:** Monitor thyroid function prior to treatment and monthly during treatment. (5.13)
- Impaired Wound Healing:** Withhold LENVIMA for at least 1 week before elective surgery. Do not administer for at least 2 weeks following major surgery and until adequate wound healing. The safety of resumption of LENVIMA after resolution of wound healing complications has not been established. (5.14)
- Osteonecrosis of the Jaw:** Consider preventive dentistry prior to treatment with LENVIMA. Avoid invasive dental procedures, if possible, particularly in patients at higher risk. (5.15)
- Embryo-Fetal Toxicity:** Can cause fetal harm. Advise females of reproductive potential of the potential risk to a fetus and to use effective contraception. (5.16, 8.1, 8.3)

ADVERSE REACTIONS

- In DTC, the most common adverse reactions (incidence $\geq 30\%$) for LENVIMA are hypertension, fatigue, diarrhea, arthralgia/myalgia, decreased appetite, decreased weight, nausea, stomatitis, headache, vomiting, proteinuria, palmar-plantar erythrodysesthesia syndrome, abdominal pain, and dysphonia. (6.1)
 - In RCC:
 - The most common adverse reactions (incidence $\geq 20\%$) for LENVIMA and pembrolizumab are fatigue, diarrhea, musculoskeletal pain, hypothyroidism, hypertension, stomatitis, decreased appetite, rash, nausea, decreased weight, dysphonia, proteinuria, palmar-plantar erythrodysesthesia syndrome, abdominal pain, hemorrhagic events, vomiting, constipation, hepatotoxicity, headache, and acute kidney injury. (6.1)
 - The most common adverse reactions (incidence $\geq 30\%$) for LENVIMA and everolimus are diarrhea, fatigue, arthralgia/myalgia, decreased appetite, vomiting, nausea, stomatitis/oral inflammation, hypertension, peripheral edema, cough, abdominal pain, dyspnea, rash, decreased weight, hemorrhagic events, and proteinuria. (6.1)
 - In HCC, the most common adverse reactions (incidence $\geq 20\%$) for LENVIMA are hypertension, fatigue, diarrhea, decreased appetite, arthralgia/myalgia, decreased weight, abdominal pain, palmar-plantar erythrodysesthesia syndrome, proteinuria, dysphonia, hemorrhagic events, hypothyroidism, and nausea. (6.1)
 - In EC, the most common adverse reactions (incidence $\geq 20\%$) for LENVIMA and pembrolizumab are hypothyroidism, hypertension, fatigue, diarrhea, musculoskeletal disorders, nausea, decreased appetite, vomiting, stomatitis, decreased weight, abdominal pain, urinary tract infection, proteinuria, constipation, headache, hemorrhagic events, palmar-plantar erythrodysesthesia, dysphonia, and rash. (6.1)
- To report SUSPECTED ADVERSE REACTIONS, contact Eisai Inc. at 1-877-873-4724 or FDA at 1-800-FDA-1088 or www.fda.gov/medwatch.**

USE IN SPECIFIC POPULATIONS

- Lactation: Advise not to breastfeed. (8.2)
- See 17 for PATIENT COUNSELING INFORMATION and FDA-approved patient labeling.

Revised: 11/2022

FULL PRESCRIBING INFORMATION: CONTENTS*

1 INDICATIONS AND USAGE

- 1.1 Differentiated Thyroid Cancer
- 1.2 Renal Cell Carcinoma
- 1.3 Hepatocellular Carcinoma
- 1.4 Endometrial Carcinoma

2 DOSAGE AND ADMINISTRATION

- 2.1 Patient Selection
- 2.2 Important Dosage Information
- 2.3 Recommended Dosage for Differentiated Thyroid Cancer (DTC)
- 2.4 Recommended Dosage for Renal Cell Carcinoma (RCC)
- 2.5 Recommended Dosage for Hepatocellular Carcinoma (HCC)
- 2.6 Recommended Dosage for Endometrial Carcinoma (EC)
- 2.7 Dosage Modifications for Adverse Reactions
- 2.8 Dosage Modifications for Severe Renal Impairment
- 2.9 Dosage Modifications for Severe Hepatic Impairment
- 2.10 Capsule Administration and Preparation of Suspension for Administration

3 DOSAGE FORMS AND STRENGTHS

4 CONTRAINDICATIONS

5 WARNINGS AND PRECAUTIONS

- 5.1 Hypertension
- 5.2 Cardiac Dysfunction
- 5.3 Arterial Thromboembolic Events
- 5.4 Hepatotoxicity
- 5.5 Renal Failure or Impairment
- 5.6 Proteinuria
- 5.7 Diarrhea
- 5.8 Fistula Formation and Gastrointestinal Perforation
- 5.9 QT Interval Prolongation
- 5.10 Hypocalcemia
- 5.11 Reversible Posterior Leukoencephalopathy Syndrome
- 5.12 Hemorrhagic Events
- 5.13 Impairment of Thyroid Stimulating Hormone Suppression/Thyroid Dysfunction

- 5.14 Impaired Wound Healing
- 5.15 Osteonecrosis of the Jaw (ONJ)
- 5.16 Embryo-Fetal Toxicity

6 ADVERSE REACTIONS

- 6.1 Clinical Trials Experience
- 6.2 Postmarketing Experience

7 DRUG INTERACTIONS

- 7.1 Drugs That Prolong the QT Interval

8 USE IN SPECIFIC POPULATIONS

- 8.1 Pregnancy
- 8.2 Lactation
- 8.3 Females and Males of Reproductive Potential
- 8.4 Pediatric Use
- 8.5 Geriatric Use
- 8.6 Renal Impairment
- 8.7 Hepatic Impairment

10 OVERDOSAGE

11 DESCRIPTION

12 CLINICAL PHARMACOLOGY

- 12.1 Mechanism of Action
- 12.2 Pharmacodynamics
- 12.3 Pharmacokinetics

13 NONCLINICAL TOXICOLOGY

- 13.1 Carcinogenesis, Mutagenesis, Impairment of Fertility

14 CLINICAL STUDIES

- 14.1 Differentiated Thyroid Cancer
- 14.2 Renal Cell Carcinoma
- 14.3 Hepatocellular Carcinoma
- 14.4 Endometrial Carcinoma (EC)

16 HOW SUPPLIED/STORAGE AND HANDLING

17 PATIENT COUNSELING INFORMATION

*Sections or subsections omitted from the full prescribing information are not listed.

FULL PRESCRIBING INFORMATION

1 INDICATIONS AND USAGE

1.1 Differentiated Thyroid Cancer

LENVIMA is indicated for the treatment of patients with locally recurrent or metastatic, progressive, radioactive iodine-refractory differentiated thyroid cancer (DTC).

1.2 Renal Cell Carcinoma

LENVIMA, in combination with pembrolizumab, is indicated for the first-line treatment of adult patients with advanced renal cell carcinoma (RCC).

LENVIMA, in combination with everolimus, is indicated for the treatment of adult patients with advanced RCC following one prior anti-angiogenic therapy.

1.3 Hepatocellular Carcinoma

LENVIMA is indicated for the first-line treatment of patients with unresectable hepatocellular carcinoma (HCC).

1.4 Endometrial Carcinoma

LENVIMA, in combination with pembrolizumab, is indicated for the treatment of patients with advanced endometrial carcinoma (EC) that is mismatch repair proficient (pMMR), as determined by an FDA-approved test, or not microsatellite instability-high (MSI-H), who have disease progression following prior systemic therapy in any setting and are not candidates for curative surgery or radiation[*see Dosage and Administration (2.1)*].

2 DOSAGE AND ADMINISTRATION

2.1 Patient Selection

For the pMMR/not MSI-H advanced endometrial carcinoma indication, select patients for treatment with LENVIMA in combination with pembrolizumab based on MSI or MMR status in tumor specimens [*see Clinical Studies (14.4)*].

Information on FDA-approved tests for patient selection is available at: <http://www.fda.gov/CompanionDiagnostics>.

An FDA-approved test for the selection of patients who are not MSI-H is not currently available.

2.2 Important Dosage Information

- Reduce the dose for certain patients with renal or hepatic impairment [*see Dosage and Administration (2.8, 2.9)*].
- Take LENVIMA once daily, with or without food, at the same time each day [*see Clinical Pharmacology (12.3)*]. If a dose is missed and cannot be taken within 12 hours, skip that dose and take the next dose at the usual time of administration.

2.3 Recommended Dosage for Differentiated Thyroid Cancer (DTC)

The recommended dosage of LENVIMA is 24 mg orally once daily until disease progression or until unacceptable toxicity.

2.4 Recommended Dosage for Renal Cell Carcinoma (RCC)

First-Line Treatment of Patients with Advanced RCC

The recommended dosage of LENVIMA is 20 mg orally once daily in combination with pembrolizumab 200 mg administered as an intravenous infusion over 30 minutes every 3 weeks until disease progression or until unacceptable toxicity or up to 2 years. After completing 2 years of combination therapy, LENVIMA may be administered as a single agent until disease progression or until unacceptable toxicity.

Refer to the pembrolizumab prescribing information for other pembrolizumab dosing information.

Previously Treated RCC

The recommended dosage of LENVIMA is 18 mg in combination with 5 mg everolimus orally once daily until disease progression or until unacceptable toxicity.

Refer to the everolimus prescribing information for recommended everolimus dosing information.

2.5 Recommended Dosage for Hepatocellular Carcinoma (HCC)

The recommended dosage of LENVIMA is based on actual body weight:

- 12 mg for patients greater than or equal to 60 kg or
- 8 mg for patients less than 60 kg.

Take LENVIMA orally once daily until disease progression or until unacceptable toxicity.

2.6 Recommended Dosage for Endometrial Carcinoma (EC)

The recommended dosage of LENVIMA is 20 mg orally once daily, in combination with pembrolizumab 200 mg administered as an intravenous infusion over 30 minutes every 3 weeks, until unacceptable toxicity or disease progression.

Refer to the pembrolizumab prescribing information for other pembrolizumab dosing information.

2.7 Dosage Modifications for Adverse Reactions

Recommendations for LENVIMA dose interruption, reduction and discontinuation for adverse reactions are listed in Table 1. Table 2 lists the recommended dosage reductions of LENVIMA for adverse reactions.

Table 1: Recommended Dosage Modifications for LENVIMA for Adverse Reactions		
Adverse Reaction	Severity^a	Dosage Modifications for LENVIMA
Hypertension [<i>see Warnings and Precautions (5.1)</i>]	Grade 3	<ul style="list-style-type: none">• Withhold for Grade 3 that persists despite optimal antihypertensive therapy.• Resume at reduced dose when hypertension is controlled at less than or equal to Grade 2.
	Grade 4	<ul style="list-style-type: none">• Permanently discontinue.
	Grade 3	<ul style="list-style-type: none">• Withhold until improves to Grade 0 to 1 or baseline.

Table 1: Recommended Dosage Modifications for LENVIMA for Adverse Reactions

Adverse Reaction	Severity^a	Dosage Modifications for LENVIMA
Cardiac Dysfunction [<i>see Warnings and Precautions (5.2)</i>]		<ul style="list-style-type: none">• Resume at a reduced dose or discontinue depending on the severity and persistence of adverse reaction.
	Grade 4	<ul style="list-style-type: none">• Permanently discontinue.
Arterial Thromboembolic Event [<i>see Warnings and Precautions (5.3)</i>]	Any Grade	<ul style="list-style-type: none">• Permanently discontinue.
Hepatotoxicity [<i>see Warnings and Precautions (5.4)</i>]	Grade 3 or 4	<ul style="list-style-type: none">• Withhold until improves to Grade 0 to 1 or baseline.• Either resume at a reduced dose or discontinue depending on severity and persistence of hepatotoxicity.• Permanently discontinue for hepatic failure.
Renal Failure or Impairment [<i>see Warnings and Precautions (5.5)</i>]	Grade 3 or 4	<ul style="list-style-type: none">• Withhold until improves to Grade 0 to 1 or baseline.• Resume at a reduced dose or discontinue depending on severity and persistence of renal impairment.
Proteinuria [<i>see Warnings and Precautions (5.6)</i>]	2 g or greater proteinuria in 24 hours	<ul style="list-style-type: none">• Withhold until less than or equal to 2 grams of proteinuria per 24 hours.• Resume at a reduced dose.• Permanently discontinue for nephrotic syndrome.
Gastrointestinal Perforation [<i>see Warnings and Precautions (5.8)</i>]	Any Grade	<ul style="list-style-type: none">• Permanently discontinue.
Fistula Formation [<i>see Warnings and Precautions (5.8)</i>]	Grade 3 or 4	<ul style="list-style-type: none">• Permanently discontinue.
QT Prolongation [<i>see Warnings and Precautions (5.9)</i>]	Greater than 500 ms or greater than 60 ms increase from baseline	<ul style="list-style-type: none">• Withhold until improves to less than or equal to 480 ms or baseline.• Resume at a reduced dose.
Reversible Posterior Leukoencephalopathy	Any Grade	<ul style="list-style-type: none">• Withhold until fully resolved.

Table 1: Recommended Dosage Modifications for LENVIMA for Adverse Reactions		
Adverse Reaction	Severity^a	Dosage Modifications for LENVIMA
Syndrome [see Warnings and Precautions (5.11)]		<ul style="list-style-type: none"> Resume at a reduced dose or discontinue depending on severity and persistence of neurologic symptoms.
Other Adverse Reactions [see Warnings and Precautions (5.7, 5.10, 5.12)]	Persistent or intolerable Grade 2 or 3 adverse reaction	<ul style="list-style-type: none"> Withhold until improves to Grade 0 to 1 or baseline. Resume at reduced dose.
	Grade 4 laboratory abnormality	
	Grade 4 adverse reaction	<ul style="list-style-type: none"> Permanently discontinue.

^a National Cancer Institute Common Terminology Criteria for Adverse Events, version 4.0.

Table 2: Recommended Dosage Reductions of LENVIMA for Adverse Reactions			
Indication	First Dosage Reduction To	Second Dosage Reduction To	Third Dosage Reduction To
DTC	20 mg once daily	14 mg once daily	10 mg once daily
RCC	14 mg once daily	10 mg once daily	8 mg once daily
Endometrial Carcinoma	14 mg once daily	10 mg once daily	8 mg once daily
HCC			
<ul style="list-style-type: none"> Actual weight 60 kg or greater 	8 mg once daily	4 mg once daily	4 mg every other day
<ul style="list-style-type: none"> Actual weight less than 60 kg 	4 mg once daily	4 mg every other day	Discontinue

Recommended Dose Modifications for Adverse Reactions for LENVIMA in Combination with Pembrolizumab

When administering LENVIMA in combination with pembrolizumab, modify the dosage of one or both drugs as appropriate. Withhold, dose reduce, or discontinue LENVIMA as shown in Table 1. Refer to pembrolizumab prescribing information for additional dose modification information.

Recommended Dose Modifications for Adverse Reactions for LENVIMA in Combination with Everolimus

When administering LENVIMA in combination with everolimus, withhold or reduce the LENVIMA dose first and then the everolimus dose for adverse reactions of both LENVIMA and everolimus. Refer to the everolimus prescribing information for additional dose modification information.

2.8 Dosage Modifications for Severe Renal Impairment

The recommended dosage of LENVIMA for patients with DTC, RCC, or endometrial carcinoma and severe renal impairment (creatinine clearance less than 30 mL/min calculated by Cockcroft-Gault equation using actual body weight) is [*see Warnings and Precautions (5.5), Use in Specific Populations (8.6)*]:

- Differentiated thyroid cancer: 14 mg orally once daily
- Renal cell carcinoma: 10 mg orally once daily
- Endometrial carcinoma: 10 mg orally once daily

2.9 Dosage Modifications for Severe Hepatic Impairment

The recommended dosage of LENVIMA for patients with DTC, RCC, or endometrial carcinoma and severe hepatic impairment (Child-Pugh C) is [*see Warnings and Precautions (5.4), Use in Specific Populations (8.7)*]:

- Differentiated thyroid cancer: 14 mg taken orally once daily
- Renal cell carcinoma: 10 mg taken orally once daily
- Endometrial carcinoma: 10 mg orally once daily

2.10 Capsule Administration and Preparation of Suspension for Administration

Administration

Oral: Capsule or Suspension

Capsule

- Swallow LENVIMA capsules whole at the same time each day with or without food [*see Clinical Pharmacology (12.3)*].

Suspension

- Prepare [*see Preparation below*] oral suspension with water or apple juice and administer at the same time each day with or without food [*see Clinical Pharmacology (12.3)*].

Feeding Tube Administration

Suspension

- Prepare [*see Preparation below*] suspension for feeding tube administration with water and administer at the same time each day with or without food [*see Clinical Pharmacology (12.3)*].

Preparation of Suspension

- Place the required number of capsules, up to a maximum of 5, in a small container (approximately 20 mL capacity) or syringe (20 mL). Do not break or crush capsules.
- Add 3 mL of liquid to the container or syringe. Wait 10 minutes for the capsule shell (outer surface) to disintegrate, then stir or shake the mixture for 3 minutes until capsules are fully disintegrated and administer the entire contents.
- Next, add an additional 2 mL of liquid to the container or syringe using a second syringe or dropper, swirl or shake and administer. Repeat this step at least once and until there is no visible residue to ensure all of the medication is taken.
- If 6 capsules are required for a dose, follow these instructions using 3 capsules at a time.

If LENVIMA suspension is not used at the time of preparation, LENVIMA suspension may be stored in a refrigerator at 36°F to 46°F (2°C to 8°C) for a maximum of 24 hours in a covered container. If not administered within 24 hours, the suspension should be discarded.

Note: Compatibility has been confirmed for polypropylene syringes and for feeding tubes of at least 5 French diameter (polyvinyl chloride or polyurethane tube) and at least 6 French diameter (silicone tube).

3 DOSAGE FORMS AND STRENGTHS

Capsules:

- 4 mg: yellowish-red body and yellowish-red cap, marked in black ink with “C” on cap and “LENV 4 mg” on body.
- 10 mg: yellow body and yellowish-red cap, marked in black ink with “C” on cap and “LENV 10 mg” on body.

4 CONTRAINDICATIONS

None.

5 WARNINGS AND PRECAUTIONS

5.1 Hypertension

Hypertension occurred in 73% of patients in SELECT (DTC) receiving LENVIMA 24 mg orally once daily and in 45% of patients in REFLECT (HCC) receiving LENVIMA 8 mg or 12 mg orally once daily. The median time to onset of new or worsening hypertension was 16 days in SELECT and 26 days in REFLECT. Grade 3 hypertension occurred in 44% of patients in SELECT and in 24% in REFLECT. Grade 4 hypertension occurred <1% in SELECT and Grade 4 hypertension was not reported in REFLECT.

In patients receiving LENVIMA 18 mg orally once daily with everolimus in Study 205 (RCC), hypertension was reported in 42% of patients and the median time to onset of new or worsening hypertension was 35 days. Grade 3 hypertension occurred in 13% of patients. Systolic blood pressure ≥ 160 mmHg occurred in 29% of patients and diastolic blood pressure ≥ 100 mmHg occurred in 21% [*see Adverse Reactions (6.1)*].

Serious complications of poorly controlled hypertension have been reported.

Control blood pressure prior to initiating LENVIMA. Monitor blood pressure after 1 week, then every 2 weeks for the first 2 months, and then at least monthly thereafter during treatment. Withhold and resume at a reduced dose when hypertension is controlled or permanently discontinue LENVIMA based on severity [see *Dosage and Administration (2.7)*].

5.2 Cardiac Dysfunction

Serious and fatal cardiac dysfunction can occur with LENVIMA. Across clinical trials in 799 patients with DTC, RCC or HCC, Grade 3 or higher cardiac dysfunction (including cardiomyopathy, left or right ventricular dysfunction, congestive heart failure, cardiac failure, ventricular hypokinesia, or decrease in left or right ventricular ejection fraction of more than 20% from baseline) occurred in 3% of LENVIMA-treated patients.

Monitor patients for clinical symptoms or signs of cardiac dysfunction. Withhold and resume at a reduced dose upon recovery or permanently discontinue LENVIMA based on severity [see *Dosage and Administration (2.7)*].

5.3 Arterial Thromboembolic Events

Among patients receiving LENVIMA or LENVIMA with everolimus, arterial thromboembolic events of any severity occurred in 2% of patients in Study 205 (RCC), 2% of patients in REFLECT (HCC) and 5% of patients in SELECT (DTC). Grade 3 to 5 arterial thromboembolic events ranged from 2% to 3% across all clinical trials [see *Adverse Reactions (6.1)*].

Among patients receiving LENVIMA with pembrolizumab, arterial thrombotic events of any severity occurred in 5% of patients in CLEAR, including myocardial infarction (3.4%) and cerebrovascular accident (2.3%).

Permanently discontinue LENVIMA following an arterial thrombotic event [see *Dosage and Administration (2.7)*]. The safety of resuming LENVIMA after an arterial thromboembolic event has not been established and LENVIMA has not been studied in patients who have had an arterial thromboembolic event within the previous 6 months.

5.4 Hepatotoxicity

Across clinical studies enrolling 1327 LENVIMA-treated patients with malignancies other than HCC, serious hepatic adverse reactions occurred in 1.4% of patients. Fatal events, including hepatic failure, acute hepatitis and hepatorenal syndrome, occurred in 0.5% of patients.

In REFLECT (HCC), hepatic encephalopathy (including hepatic encephalopathy, encephalopathy, metabolic encephalopathy, and hepatic coma) occurred in 8% of LENVIMA-treated patients and 3% of sorafenib-treated patients. Grade 3 to 5 hepatic encephalopathy occurred in 5% of LENVIMA-treated patients and 2% of sorafenib-treated patients. Grade 3 to 5 hepatic failure occurred in 3% of LENVIMA-treated patients and 3% of sorafenib-treated patients. Two percent of patients discontinued LENVIMA and 0.2% discontinued sorafenib due to hepatic encephalopathy and 1% of patients discontinued lenvatinib or sorafenib due to hepatic failure [see *Adverse Reactions (6.1)*].

Monitor liver function prior to initiating LENVIMA, then every 2 weeks for the first 2 months, and at least monthly thereafter during treatment. Monitor patients with HCC closely for signs of hepatic failure, including hepatic encephalopathy. Withhold and resume at a

reduced dose upon recovery or permanently discontinue LENVIMA based on severity [*see Dosage and Administration (2.7)*].

5.5 Renal Failure or Impairment

Serious including fatal renal failure or impairment can occur with LENVIMA. Renal impairment occurred in 14% of patients receiving LENVIMA in SELECT (DTC) and in 7% of patients receiving LENVIMA in REFLECT (HCC). Grade 3 to 5 renal failure or impairment occurred in 3% (DTC) and 2% (HCC) of patients, including 1 fatality in each study.

In Study 205 (RCC), renal impairment or renal failure occurred in 18% of patients receiving LENVIMA with everolimus, including Grade 3 in 10% of patients [*see Adverse Reactions (6.1)*].

Initiate prompt management of diarrhea or dehydration/hypovolemia. Withhold and resume at a reduced dose upon recovery or permanently discontinue LENVIMA for renal failure or impairment based on severity [*see Dosage and Administration (2.7)*].

5.6 Proteinuria

Proteinuria occurred in 34% of LENVIMA-treated patients in SELECT (DTC) and in 26% of LENVIMA-treated patients in REFLECT (HCC). Grade 3 proteinuria occurred in 11% and 6% in SELECT and REFLECT, respectively. In Study 205 (RCC), proteinuria occurred in 31% of patients receiving LENVIMA with everolimus and 14% of patients receiving everolimus. Grade 3 proteinuria occurred in 8% of patients receiving LENVIMA with everolimus compared to 2% of patients receiving everolimus [*see Adverse Reactions (6.1)*].

Monitor for proteinuria prior to initiating LENVIMA and periodically during treatment. If urine dipstick proteinuria greater than or equal to 2+ is detected, obtain a 24-hour urine protein. Withhold and resume at a reduced dose upon recovery or permanently discontinue LENVIMA based on severity [*see Dosage and Administration (2.7)*].

5.7 Diarrhea

Of the 737 patients treated with LENVIMA in SELECT (DTC) and REFLECT (HCC), diarrhea occurred in 49% of patients, including Grade 3 in 6%.

In Study 205 (RCC), diarrhea occurred in 81% of patients receiving LENVIMA with everolimus, including Grade 3 in 19%. Diarrhea was the most frequent cause of dose interruption/reduction and diarrhea recurred despite dose reduction [*see Adverse Reactions (6.1)*].

Promptly initiate management of diarrhea. Withhold and resume at a reduced dose upon recovery or permanently discontinue LENVIMA based on severity [*see Dosage and Administration (2.7)*].

5.8 Fistula Formation and Gastrointestinal Perforation

Of 799 patients treated with LENVIMA or LENVIMA with everolimus in SELECT (DTC), Study 205 (RCC) and REFLECT (HCC), fistula or gastrointestinal perforation occurred in 2%.

Permanently discontinue LENVIMA in patients who develop gastrointestinal perforation of any severity or Grade 3 or 4 fistula [*see Dosage and Administration (2.7)*].

5.9 QT Interval Prolongation

In SELECT (DTC), QT/QTc interval prolongation occurred in 9% of LENVIMA-treated patients and QT interval prolongation of >500 ms occurred in 2%. In Study 205 (RCC), QTc interval increases of >60 ms occurred in 11% of patients receiving LENVIMA with everolimus and QTc interval >500 ms occurred in 6%. In REFLECT (HCC), QTc interval increases of >60 ms occurred in 8% of LENVIMA-treated patients and QTc interval >500 ms occurred in 2%.

Monitor and correct electrolyte abnormalities at baseline and periodically during treatment. Monitor electrocardiograms in patients with congenital long QT syndrome, congestive heart failure, bradyarrhythmias, or those who are taking drugs known to prolong the QT interval, including Class Ia and III antiarrhythmics. Withhold and resume at reduced dose of LENVIMA upon recovery based on severity [see *Dosage and Administration (2.7)*].

5.10 Hypocalcemia

In SELECT (DTC), Grade 3 to 4 hypocalcemia occurred in 9% of patients receiving LENVIMA. In 65% of cases, hypocalcemia improved or resolved following calcium supplementation, with or without dose interruption or dose reduction.

In Study 205 (RCC), Grade 3 to 4 hypocalcemia occurred in 6% of patients treated with LENVIMA with everolimus. In REFLECT (HCC), Grade 3 hypocalcemia occurred in 0.8% of LENVIMA-treated patients [see *Adverse Reactions (6.1)*].

Monitor blood calcium levels at least monthly and replace calcium as necessary during treatment. Withhold and resume at reduced dose upon recovery or permanently discontinue LENVIMA depending on severity [see *Dosage and Administration (2.7)*].

5.11 Reversible Posterior Leukoencephalopathy Syndrome

Across clinical studies of 1823 patients who received LENVIMA as a single agent [see *Adverse Reactions (6.1)*], reversible posterior leukoencephalopathy syndrome (RPLS) occurred in 0.3%.

Confirm the diagnosis of RPLS with magnetic resonance imaging. Withhold and resume at a reduced dose upon recovery or permanently discontinue LENVIMA depending on severity and persistence of neurologic symptoms [see *Dosage and Administration (2.7)*].

5.12 Hemorrhagic Events

Serious including fatal hemorrhagic events can occur with LENVIMA. Across SELECT (DTC), Study 205 (RCC) and REFLECT (HCC), hemorrhagic events of any grade occurred in 29% of the 799 patients treated with LENVIMA as a single agent or in combination with everolimus. The most frequently reported hemorrhagic events (all grades and occurring in at least 5% of patients) were epistaxis and hematuria.

In SELECT, Grade 3 to 5 hemorrhage occurred in 2% of patients receiving LENVIMA, including 1 fatal intracranial hemorrhage among 16 patients who received LENVIMA and had CNS metastases at baseline. In Study 205, Grade 3 to 5 hemorrhage occurred in 8% of patients receiving LENVIMA with everolimus, including 1 fatal cerebral hemorrhage. In REFLECT, Grade 3 to 5 hemorrhage occurred in 5% of patients receiving LENVIMA, including 7 fatal hemorrhagic events [see *Adverse Reactions (6.1)*].

Serious tumor related bleeds, including fatal hemorrhagic events, occurred in patients treated with LENVIMA in clinical trials and in the post-marketing setting. In post-marketing

surveillance, serious and fatal carotid artery hemorrhages were seen more frequently in patients with anaplastic thyroid carcinoma (ATC) than in other tumor types. The safety and effectiveness of LENVIMA in patients with ATC have not been demonstrated in clinical trials.

Consider the risk of severe or fatal hemorrhage associated with tumor invasion or infiltration of major blood vessels (e.g. carotid artery). Withhold and resume at reduced dose upon recovery or permanently discontinue LENVIMA based on the severity [*see Dosage and Administration (2.7)*].

5.13 Impairment of Thyroid Stimulating Hormone Suppression/Thyroid Dysfunction

LENVIMA impairs exogenous thyroid suppression. In SELECT (DTC), 88% of all patients had a baseline thyroid stimulating hormone (TSH) level ≤ 0.5 mU/L. In those patients with a normal TSH at baseline, elevation of TSH level >0.5 mU/L was observed post baseline in 57% of LENVIMA-treated patients.

Grade 1 or 2 hypothyroidism occurred in 24% of patients receiving LENVIMA with everolimus in Study 205 (RCC) and in 21% of patients receiving LENVIMA in REFLECT (HCC). In those patients with a normal or low TSH at baseline, an elevation of TSH was observed post baseline in 70% of patients receiving LENVIMA in REFLECT and 60% of patients receiving LENVIMA with everolimus in Study 205 [*see Adverse Reactions (6.1)*].

Monitor thyroid function prior to initiating LENVIMA and at least monthly during treatment. Treat hypothyroidism according to standard medical practice.

5.14 Impaired Wound Healing

Impaired wound healing has been reported in patients who received LENVIMA [*see Adverse Reactions (6.2)*].

Withhold LENVIMA for at least 1 week prior to elective surgery. Do not administer for at least 2 weeks following major surgery and until adequate wound healing. The safety of resumption of LENVIMA after resolution of wound healing complications has not been established.

5.15 Osteonecrosis of the Jaw (ONJ)

Osteonecrosis of the Jaw (ONJ) has been reported in patients receiving LENVIMA [*see Adverse Reactions (6.1)*]. Concomitant exposure to other risk factors, such as bisphosphonates, denosumab, dental disease or invasive dental procedures, may increase the risk of ONJ.

Perform an oral examination prior to treatment with LENVIMA and periodically during LENVIMA treatment. Advise patients regarding good oral hygiene practices. Avoid invasive dental procedures, if possible, while on LENVIMA treatment, particularly in patients at higher risk. Withhold LENVIMA for at least 1 week prior to scheduled dental surgery or invasive dental procedures, if possible. For patients requiring invasive dental procedures, discontinuation of bisphosphonate treatment may reduce the risk of ONJ. Withhold LENVIMA if ONJ develops and restart based on clinical judgement of adequate resolution.

5.16 Embryo-Fetal Toxicity

Based on its mechanism of action and data from animal reproduction studies, LENVIMA can cause fetal harm when administered to a pregnant woman. In animal reproduction studies, oral administration of lenvatinib during organogenesis at doses below the recommended clinical doses resulted in embryotoxicity, fetotoxicity, and teratogenicity in rats and rabbits.

Advise pregnant women of the potential risk to a fetus. Advise females of reproductive potential to use effective contraception during treatment with LENVIMA and for 30 days after the last dose [see *Use in Specific Populations* (8.1, 8.3)].

6 ADVERSE REACTIONS

The following adverse reactions are discussed elsewhere in the labeling:

- Hypertension [see *Warnings and Precautions* (5.1)]
- Cardiac Dysfunction [see *Warnings and Precautions* (5.2)]
- Arterial Thromboembolic Events [see *Warnings and Precautions* (5.3)]
- Hepatotoxicity [see *Warnings and Precautions* (5.4)]
- Renal Failure and Impairment [see *Warnings and Precautions* (5.5)]
- Proteinuria [see *Warnings and Precautions* (5.6)]
- Diarrhea [see *Warnings and Precautions* (5.7)]
- Fistula Formation and Gastrointestinal Perforation [see *Warnings and Precautions* (5.8)]
- QT Interval Prolongation [see *Warnings and Precautions* (5.9)]
- Hypocalcemia [see *Warnings and Precautions* (5.10)]
- Reversible Posterior Leukoencephalopathy Syndrome [see *Warnings and Precautions* (5.11)]
- Hemorrhagic Events [see *Warnings and Precautions* (5.12)]
- Impairment of Thyroid Stimulating Hormone Suppression/Thyroid Dysfunction [see *Warnings and Precautions* (5.13)]
- Impaired Wound Healing [see *Warnings and Precautions* (5.14)]
- Osteonecrosis of the Jaw (ONJ) [see *Warnings and Precautions* (5.15)]

6.1 Clinical Trials Experience

Because clinical trials are conducted under widely varying conditions, adverse reaction rates observed in the clinical trials of a drug cannot be directly compared to rates in the clinical trials of another drug and may not reflect the rates observed in practice.

The data in the Warnings and Precautions reflect exposure to LENVIMA as a single agent in 261 patients with DTC (SELECT) and 476 patients with HCC (REFLECT), LENVIMA with pembrolizumab in 406 patients with endometrial carcinoma (Study 309), LENVIMA with everolimus in 62 patients with RCC (Study 205), and LENVIMA with pembrolizumab in 352 patients with RCC (CLEAR). Safety data obtained in 1823 patients with advanced solid tumors who received LENVIMA as a single agent across multiple clinical studies was used to further characterize the risks of serious adverse reactions. Among the 1823 patients who

received LENVIMA as a single agent, the median age was 61 years (20 to 89 years), the dose range was 0.2 mg to 32 mg daily, and the median duration of exposure was 5.6 months.

The data below reflect exposure to LENVIMA in 1557 patients enrolled in randomized, active-controlled trials (REFLECT; Study 205; CLEAR; Study 309), and a randomized, placebo-controlled trial (SELECT). The median duration of exposure to LENVIMA across these five studies ranged from 6 to 16 months. The demographic and exposure data for each clinical trial population are described in the subsections below.

Differentiated Thyroid Cancer

The safety of LENVIMA was evaluated in SELECT, in which patients with radioactive iodine-refractory differentiated thyroid cancer were randomized (2:1) to LENVIMA (n=261) or placebo (n=131) [see *Clinical Studies (14.1)*]. The median treatment duration was 16.1 months for LENVIMA. Among 261 patients who received LENVIMA, median age was 64 years, 52% were females, 80% were White, 18% were Asian, and 2% were Black; and 4% were Hispanic/Latino.

The most common adverse reactions observed in LENVIMA-treated patients ($\geq 30\%$) were, in order of decreasing frequency, hypertension, fatigue, diarrhea, arthralgia/myalgia, decreased appetite, decreased weight, nausea, stomatitis, headache, vomiting, proteinuria, palmar-plantar erythrodysesthesia (PPE) syndrome, abdominal pain, and dysphonia. The most common serious adverse reactions (at least 2%) were pneumonia (4%), hypertension (3%), and dehydration (3%).

Adverse reactions led to dose reductions in 68% of patients receiving LENVIMA; 18% of patients discontinued LENVIMA for adverse reactions. The most common adverse reactions (at least 10%) resulting in dose reductions of LENVIMA were hypertension (13%), proteinuria (11%), decreased appetite (10%), and diarrhea (10%); the most common adverse reactions (at least 1%) resulting in discontinuation of LENVIMA were hypertension (1%) and asthenia (1%).

Table 3 presents adverse reactions occurring at a higher rate in LENVIMA-treated patients than patients receiving placebo in the double-blind phase of the study.

Adverse Reaction	LENVIMA 24 mg N=261		Placebo N=131	
	All Grades (%)	Grades 3-4 (%)	All Grades (%)	Grades 3-4 (%)
Vascular				
Hypertension ^a	73	44	16	4
Hypotension	9	2	2	0
Gastrointestinal				
Diarrhea	67	9	17	0
Nausea	47	2	25	1
Stomatitis ^b	41	5	8	0
Vomiting	36	2	15	0
Abdominal pain ^c	31	2	11	1
Constipation	29	0.4	15	1
Oral pain ^d	25	1	2	0
Dry mouth	17	0.4	8	0
Dyspepsia	13	0.4	4	0

Table 3: Adverse Reactions Occurring in Patients with a Between-Group Difference of $\geq 5\%$ in All Grades or $\geq 2\%$ in Grades 3 and 4 in SELECT (DTC)

Adverse Reaction	LENVIMA 24 mg N=261		Placebo N=131	
	All Grades (%)	Grades 3-4 (%)	All Grades (%)	Grades 3-4 (%)
General				
Fatigue ^e	67	11	35	4
Edema peripheral	21	0.4	8	0
Musculoskeletal and Connective Tissue				
Arthralgia/Myalgia ^f	62	5	28	3
Metabolism and Nutrition				
Decreased appetite	54	7	18	1
Decreased weight	51	13	15	1
Dehydration	9	2	2	1
Nervous System				
Headache	38	3	11	1
Dysgeusia	18	0	3	0
Dizziness	15	0.4	9	0
Renal and Urinary				
Proteinuria	34	11	3	0
Skin and Subcutaneous Tissue				
Palmar-plantar erythrodysesthesia	32	3	1	0
Rash ^g	21	0.4	3	0
Alopecia	12	0	5	0
Hyperkeratosis	7	0	2	0
Respiratory, Thoracic and Mediastinal				
Dysphonia	31	1	5	0
Cough	24	0	18	0
Epistaxis	12	0	1	0
Psychiatric				
Insomnia	12	0	3	0
Infections				
Urinary tract infection	11	1	5	0
Dental and oral infections ^h	10	1	1	0
Cardiac				
Electrocardiogram QT prolonged	9	2	2	0
<p>a Includes hypertension, hypertensive crisis, increased blood pressure diastolic, and increased blood pressure</p> <p>b Includes aphthous stomatitis, stomatitis, glossitis, mouth ulceration, and mucosal inflammation</p> <p>c Includes abdominal discomfort, abdominal pain, lower abdominal pain, upper abdominal pain, abdominal tenderness, epigastric discomfort, and gastrointestinal pain</p> <p>d Includes oral pain, glossodynia, and oropharyngeal pain</p> <p>e Includes asthenia, fatigue, and malaise</p> <p>f Includes musculoskeletal pain, back pain, pain in extremity, arthralgia, and myalgia</p> <p>g Includes macular rash, maculo-papular rash, generalized rash, and rash</p> <p>h Includes gingivitis, oral infection, parotitis, pericoronitis, periodontitis, sialoadenitis, tooth abscess, and tooth infection</p>				

Clinically important adverse reactions occurring more frequently in LENVIMA-treated patients than patients receiving placebo, but with an incidence of $< 5\%$ were pulmonary embolism (3%, including fatal reports vs 2%, respectively) and osteonecrosis of the jaw (0.4% vs 0%, respectively).

Laboratory abnormalities with a difference of $\geq 2\%$ in Grade 3 – 4 events and at a higher incidence in the LENVIMA arm are presented in Table 4.

Table 4: Laboratory Abnormalities with a Difference of $\geq 2\%$ in Grade 3 - 4 Events and at a Higher Incidence in the LENVIMA Arm^{a, b} in SELECT (DTC)		
Laboratory Abnormality	LENVIMA 24 mg	Placebo
	Grades 3-4 (%)	Grades 3-4 (%)
Chemistry		
Hypocalcemia	9	2
Hypokalemia	6	1
Increased aspartate aminotransferase (AST)	5	0
Increased alanine aminotransferase (ALT)	4	0
Increased lipase	4	1
Increased creatinine	3	0
Hematology		
Thrombocytopenia	2	0
<p>a With at least 1 grade increase from baseline</p> <p>b Laboratory Abnormality percentage is based on the number of patients who had both baseline and at least one post baseline laboratory measurement for each parameter. LENVIMA (n = 253 to 258), Placebo (n = 129 to 131)</p>		

The following laboratory abnormalities (all Grades) occurred in $>5\%$ of LENVIMA-treated patients and at a rate that was two-fold or higher than in patients who received placebo: hypoalbuminemia, increased alkaline phosphatase, hypomagnesemia, hypoglycemia, hyperbilirubinemia, hypercalcemia, hypercholesterolemia, increased serum amylase, and hyperkalemia.

First-Line Treatment of Renal Cell Carcinoma in Combination with Pembrolizumab (CLEAR)

The safety of LENVIMA in combination with pembrolizumab was investigated in CLEAR [see *Clinical Studies (14.2)*]. Patients received LENVIMA 20 mg orally once daily in combination with pembrolizumab 200 mg intravenously every 3 weeks (n=352), or LENVIMA 18 mg orally once daily in combination with everolimus 5 mg orally once daily (n=355), or sunitinib 50 mg orally once daily for 4 weeks then off treatment for 2 weeks (n=340). The median duration of exposure to the combination therapy of LENVIMA and pembrolizumab was 17 months (range: 0.1 to 39).

Fatal adverse reactions occurred in 4.3% of patients receiving LENVIMA in combination with pembrolizumab, including cardio-respiratory arrest (0.9%), sepsis (0.9%), and one case (0.3%) each of arrhythmia, autoimmune hepatitis, dyspnea, hypertensive crisis, increased blood creatinine, multiple organ dysfunction syndrome, myasthenic syndrome, myocarditis, nephritis, pneumonitis, ruptured aneurysm and subarachnoid hemorrhage.

Serious adverse reactions occurred in 51% of patients receiving LENVIMA and pembrolizumab. Serious adverse reactions in $\geq 2\%$ of patients were hemorrhagic events (5%), diarrhea (4%), hypertension (3%), myocardial infarction (3%), pneumonitis (3%), vomiting (3%), acute kidney injury (2%), adrenal insufficiency (2%), dyspnea (2%), and pneumonia (2%).

Permanent discontinuation of LENVIMA, pembrolizumab, or both due to an adverse reaction occurred in 37% of patients; 26% LENVIMA only, 29% pembrolizumab only, and 13% both drugs. The most common adverse reactions ($\geq 2\%$) leading to permanent discontinuation of LENVIMA, pembrolizumab, or both were pneumonitis (3%), myocardial infarction (3%), hepatotoxicity (3%), acute kidney injury (3%), rash (3%), and diarrhea (2%).

Dose interruptions of LENVIMA, pembrolizumab, or both due to an adverse reaction occurred in 78% of patients receiving LENVIMA in combination with pembrolizumab. LENVIMA was interrupted in 73% of patients and both drugs were interrupted in 39% of patients. LENVIMA was dose reduced in 69% of patients. The most common adverse reactions ($\geq 5\%$) resulting in dose reduction or interruption of LENVIMA were diarrhea (26%), fatigue (18%), hypertension (17%), proteinuria (13%), decreased appetite (12%), palmar-plantar erythrodysesthesia (11%), nausea (9%), stomatitis (9%), musculoskeletal pain (8%), rash (8%), increased lipase (7%), abdominal pain (6%), and vomiting (6%), increased ALT (5%), and increased amylase (5%).

Tables 5 and 6 summarize the adverse reactions and laboratory abnormalities, respectively, that occurred in $\geq 20\%$ of patients treated with LENVIMA and pembrolizumab in CLEAR.

Table 5: Adverse Reactions in $\geq 20\%$ of Patients on LENVIMA plus Pembrolizumab in CLEAR (RCC)				
	LENVIMA 20 mg in combination with Pembrolizumab 200mg N=352		Sunitinib 50 mg N=340	
Adverse Reactions	All Grades (%)	Grade 3-4 (%)	All Grades (%)	Grade 3-4 (%)
General				
Fatigue ^a	63	9	56	8
Gastrointestinal				
Diarrhea ^b	62	10	50	6
Stomatitis ^c	43	2	43	2
Nausea	36	3	33	1
Abdominal pain ^d	27	2	18	1
Vomiting	26	3	20	1
Constipation	25	1	19	0
Musculoskeletal and connective tissue				
Musculoskeletal pain ^e	58	4	41	3
Endocrine				
Hypothyroidism ^f	57	1	32	0
Vascular				
Hypertension ^g	56	29	43	20
Hemorrhagic events ^h	27	5	26	4
Metabolism				
Decreased appetite ⁱ	41	4	31	1

Table 5: Adverse Reactions in $\geq 20\%$ of Patients on LENVIMA plus Pembrolizumab in CLEAR (RCC)				
	LENVIMA 20 mg in combination with Pembrolizumab 200mg N=352		Sunitinib 50 mg N=340	
Adverse Reactions	All Grades (%)	Grade 3-4 (%)	All Grades (%)	Grade 3-4 (%)
Skin and subcutaneous tissue				
Rash ^l	37	5	17	1
Palmar-plantar erythrodysesthesia syndrome ^k	29	4	38	4
Respiratory, thoracic, and mediastinal				
Dysphonia	30	0	4	0
Renal and urinary				
Proteinuria ^l	30	8	13	3
Acute kidney injury ^m	21	5	16	2
Investigations				
Weight decreased	30	8	9	0
Hepatobiliary				
Hepatotoxicity ⁿ	25	9	21	5
Nervous system				
Headache	23	1	16	1
<p>a Includes asthenia, fatigue, lethargy and malaise</p> <p>b Includes diarrhea and gastroenteritis</p> <p>c Includes aphthous ulcer, gingival pain, glossitis, glossodynia, mouth ulceration, mucosal inflammation, oral discomfort, oral mucosal blistering, oral pain, oropharyngeal pain, pharyngeal inflammation, and stomatitis</p> <p>d Includes abdominal discomfort, abdominal pain, abdominal rigidity, abdominal tenderness, epigastric discomfort, lower abdominal pain, and upper abdominal pain</p> <p>e Includes arthralgia, arthritis, back pain, bone pain, breast pain, musculoskeletal chest pain, musculoskeletal discomfort, musculoskeletal pain, musculoskeletal stiffness, myalgia, neck pain, non-cardiac chest pain, pain in extremity, and pain in jaw</p> <p>f Includes hypothyroidism, increased blood thyroid stimulating hormone and secondary hypothyroidism</p> <p>g Includes essential hypertension, increased blood pressure, increased diastolic blood pressure, hypertension, hypertensive crisis, hypertensive retinopathy, and labile blood pressure</p> <p>h Includes all hemorrhage terms. Hemorrhage terms that occurred in 1 or more subjects in either treatment group include: Anal hemorrhage, aneurysm ruptured, blood blister, blood loss anemia, blood urine present, catheter site hematoma, cerebral microhemorrhage, conjunctival hemorrhage, contusion, diarrhea hemorrhagic, disseminated intravascular coagulation, ecchymosis, epistaxis, eye hemorrhage, gastric hemorrhage, gastritis hemorrhagic, gingival bleeding, hemorrhage urinary tract, hemothorax, hematemeses, hematoma, hematochezia, hematuria, hemoptysis, hemorrhoidal hemorrhage, increased tendency to bruise, injection site hematoma, injection site hemorrhage, intra-abdominal hemorrhage, lower gastrointestinal hemorrhage, Mallory-Weiss syndrome, melaena, petechiae, rectal hemorrhage, renal hemorrhage, retroperitoneal hemorrhage, small intestinal hemorrhage, splinter hemorrhages, subcutaneous hematoma, subdural hematoma, subarachnoid hemorrhage, thrombotic thrombocytopenic purpura, tumor hemorrhage, traumatic hematoma, and upper gastrointestinal hemorrhage</p> <p>i Includes decreased appetite and early satiety</p> <p>j Includes genital rash, infusion site rash, penile rash, perineal rash, rash, rash erythematous, rash macular, rash maculo-papular, rash papular, rash pruritic, and rash pustular</p>				

Table 5: Adverse Reactions in $\geq 20\%$ of Patients on LENVIMA plus Pembrolizumab in CLEAR (RCC)				
	LENVIMA 20 mg in combination with Pembrolizumab 200mg N=352		Sunitinib 50 mg N=340	
Adverse Reactions	All Grades (%)	Grade 3-4 (%)	All Grades (%)	Grade 3-4 (%)
k	Includes palmar erythema, palmar-plantar erythrodysesthesia syndrome and plantar erythema			
l	Includes hemoglobinuria, nephrotic syndrome, and proteinuria			
m	Includes acute kidney injury, azotaemia, blood creatinine increased, creatinine renal clearance decreased, hypercreatininaemia, renal failure, renal impairment, oliguria, glomerular filtration rate decreased, and nephropathy toxic			
n	Includes alanine aminotransferase increased, aspartate aminotransferase increased, blood bilirubin increased, drug-induced liver injury, hepatic enzyme increased, hepatic failure, hepatic function abnormal, hepatocellular injury, hepatotoxicity, hyperbilirubinemia, hypertransaminasemia, immune-mediated hepatitis, liver function test increased, liver injury, transaminases increased, and gamma-glutamyltransferase increased			

Clinically relevant adverse reactions ($< 20\%$) that occurred in patients receiving LENVIMA/pembrolizumab were myocardial infarction (3%) and angina pectoris (1%).

Table 6: Laboratory Abnormalities in $\geq 20\%$ (All Grades) of Patients on LENVIMA plus Pembrolizumab in CLEAR (RCC)				
	LENVIMA 20 mg in combination with Pembrolizumab 200 mg		Sunitinib 50 mg	
Laboratory Abnormality^a	All Grades %^b	Grades 3-4 %^b	All Grades %^b	Grade 3-4 %^b
Chemistry				
Hypertriglyceridemia	80	15	71	15
Hypercholesterolemia	64	5	43	1
Increased lipase	61	34	59	28
Increased creatinine	61	5	61	2
Increased amylase	59	17	41	9
Increased aspartate aminotransferase (AST)	58	7	57	3
Hyperglycemia	55	7	48	3
Increased alanine aminotransferase (ALT)	52	7	49	4
Hyperkalemia	44	9	28	6
Hypoglycemia	44	2	27	1
Hyponatremia	41	12	28	9
Decreased albumin	34	0.3	22	0

Table 6: Laboratory Abnormalities in $\geq 20\%$ (All Grades) of Patients on LENVIMA plus Pembrolizumab in CLEAR (RCC)				
Laboratory Abnormality^a	LENVIMA 20 mg in combination with Pembrolizumab 200 mg		Sunitinib 50 mg	
	All Grades %^b	Grades 3-4 %^b	All Grades %^b	Grade 3-4 %^b
Increased alkaline phosphatase	32	4	32	1
Hypocalcemia	30	2	22	1
Hypophosphatemia	29	7	50	8
Hypomagnesemia	25	2	15	3
Increased creatine phosphokinase	24	6	36	5
Hypermagnesemia	23	2	22	3
Hypercalcemia	21	1	11	1
Hematology				
Lymphopenia	54	9	66	15
Thrombocytopenia	39	2	73	13
Anemia	38	3	66	8
Leukopenia	34	1	77	8
Neutropenia	31	4	72	16
a With at least 1 grade increase from baseline b Laboratory abnormality percentage is based on the number of patients who had both baseline and at least one post baseline laboratory measurement for each parameter. LENVIMA/pembrolizumab (n= 343 to 349) and sunitinib (n= 329 to 335).				

Grade 3 and 4 increased ALT or AST was seen in 9% of patients. Grade ≥ 2 increased ALT or AST was reported in 64 (18%) patients, of whom 20 (31%) received ≥ 40 mg daily oral prednisone equivalent. Recurrence of Grade ≥ 2 increased ALT or AST was observed in 3 patients on rechallenge in patients receiving LENVIMA and 10 patients receiving both LENVIMA and pembrolizumab.

Previously Treated Renal Cell Carcinoma in Combination with Everolimus (Study 205)

The safety of LENVIMA was evaluated in Study 205, in which patients with unresectable advanced or metastatic renal cell carcinoma (RCC) were randomized (1:1:1) to LENVIMA 18 mg orally once daily with everolimus 5 mg orally once daily (n=51), LENVIMA 24 mg orally once daily (n=52), or everolimus 10 mg orally once daily (n=50) [see *Clinical Studies (14.2)*]. This data also includes patients on the dose escalation portion of the study who received LENVIMA with everolimus (n=11). The median treatment duration was 8.1 months for LENVIMA with everolimus. Among 62 patients who received LENVIMA with everolimus, the median age was 61 years, 71% were men, and 98% were White.

The most common adverse reactions observed in the LENVIMA with everolimus-treated group ($\geq 30\%$) were, in order of decreasing frequency, diarrhea, fatigue, arthralgia/myalgia, decreased appetite, vomiting, nausea, stomatitis/oral inflammation, hypertension, peripheral edema, cough, abdominal pain, dyspnea, rash, decreased weight, hemorrhagic events, and proteinuria. The most common serious adverse reactions ($\geq 5\%$) were renal failure (11%),

dehydration (10%), anemia (6%), thrombocytopenia (5%), diarrhea (5%), vomiting (5%), and dyspnea (5%).

Adverse reactions led to dose reductions or interruption in 89% of patients receiving LENVIMA with everolimus. The most common adverse reactions ($\geq 5\%$) resulting in dose reductions in the LENVIMA with everolimus-treated group were diarrhea (21%), fatigue (8%), thrombocytopenia (6%), vomiting (6%), nausea (5%), and proteinuria (5%).

Treatment discontinuation due to an adverse reaction occurred in 29% of patients in the LENVIMA with everolimus-treated group.

Table 7 presents the adverse reactions in $>15\%$ of patients in the LENVIMA with everolimus arm. Study 205 was not designed to demonstrate a statistically significant difference in adverse reaction rates for LENVIMA in combination with everolimus, as compared to everolimus for any specific adverse reaction listed in Table 7.

Table 7: Adverse Reactions Occurring in $>15\%$ of Patients in the LENVIMA with Everolimus Arm in Study 205 (RCC)				
Adverse Reactions	LENVIMA 18 mg with Everolimus 5 mg N=62		Everolimus 10 mg N=50	
	Grade 1-4 (%)	Grade 3-4 (%)	Grade 1-4 (%)	Grade 3-4 (%)
Endocrine				
Hypothyroidism	24	0	2	0
Gastrointestinal				
Diarrhea	81	19	34	2
Vomiting	48	7	12	0
Nausea	45	5	16	0
Stomatitis/Oral inflammation ^a	44	2	50	4
Abdominal pain ^b	37	3	8	0
Oral pain ^c	23	2	4	0
Dyspepsia/Gastro-esophageal reflux	21	0	12	0
Constipation	16	0	18	0
General				
Fatigue ^d	73	18	40	2
Peripheral edema	42	2	20	0
Pyrexia/Increased body temperature	21	2	10	2
Metabolism and Nutrition				
Decreased appetite	53	5	18	0
Decreased weight	34	3	8	0
Musculoskeletal and Connective Tissue				
Arthralgia/Myalgia ^e	55	5	32	0
Musculoskeletal chest pain	18	2	4	0
Nervous System				
Headache	19	2	10	2
Psychiatric				
Insomnia	16	2	2	0

Table 7: Adverse Reactions Occurring in >15% of Patients in the LENVIMA with Everolimus Arm in Study 205 (RCC)				
	LENVIMA 18 mg with Everolimus 5 mg N=62		Everolimus 10 mg N=50	
Adverse Reactions	Grade 1-4 (%)	Grade 3-4 (%)	Grade 1-4 (%)	Grade 3-4 (%)
Renal and Urinary				
Proteinuria/Urine protein present	31	8	14	2
Renal failure event ^f	18	10	12	2
Respiratory, Thoracic and Mediastinal				
Cough	37	0	30	0
Dyspnea/Exertional dyspnea	35	5	28	8
Dysphonia	18	0	4	0
Skin and Subcutaneous Tissue				
Rash ^g	35	0	40	0
Vascular				
Hypertension/Increased blood pressure	42	13	10	2
Hemorrhagic events ^h	32	6	26	2
<p>a Includes aphthous stomatitis, gingival inflammation, glossitis, and mouth ulceration</p> <p>b Includes abdominal discomfort, gastrointestinal pain, lower abdominal pain, and upper abdominal pain</p> <p>c Includes gingival pain, glossodynia, and oropharyngeal pain</p> <p>d Includes asthenia, fatigue, lethargy and malaise</p> <p>e Includes arthralgia, back pain, extremity pain, musculoskeletal pain, and myalgia</p> <p>f Includes blood creatinine increased, blood urea increased, creatinine renal clearance decreased, nephropathy toxic, renal failure, renal failure acute, and renal impairment</p> <p>g Includes erythema, erythematous rash, genital rash, macular rash, maculo-papular rash, papular rash, pruritic rash, pustular rash, and septic rash</p> <p>h Includes hemorrhagic diarrhea, epistaxis, gastric hemorrhage, hemarthrosis, hematoma, hematuria, hemoptysis, lip hemorrhage, renal hematoma, and scrotal hematocele</p>				

In Table 8, Grade 3-4 laboratory abnormalities occurring in $\geq 3\%$ of patients in the LENVIMA with everolimus arm are presented.

Table 8: Grade 3-4 Laboratory Abnormalities Occurring in $\geq 3\%$ of Patients in the LENVIMA with Everolimus Arm^{a,b} in Study 205 (RCC)		
Laboratory Abnormality	LENVIMA 18 mg with Everolimus 5 mg	Everolimus 10 mg
	Grades 3-4 (%)	Grades 3-4 (%)
Chemistry		
Hypertriglyceridemia	18	18
Increased lipase	13	12
Hypercholesterolemia	11	0
Hyponatremia	11	6
Hypophosphatemia	11	6
Hyperkalemia	6	2
Hypocalcemia	6	2
Hypokalemia	6	2

Table 8: Grade 3-4 Laboratory Abnormalities Occurring in $\geq 3\%$ of Patients in the LENVIMA with Everolimus Arm^{a,b} in Study 205 (RCC)		
Laboratory Abnormality	LENVIMA 18 mg with Everolimus 5 mg	Everolimus 10 mg
	Grades 3-4 (%)	Grades 3-4 (%)
Increased aspartate aminotransferase (AST)	3	0
Increased alanine aminotransferase (ALT)	3	2
Increased alkaline phosphatase	3	0
Hyperglycemia	3	16
Increased creatine kinase	3	4
Hematology		
Lymphopenia	10	20
Anemia	8	16
Thrombocytopenia	5	0
a With at least 1 grade increase from baseline b Laboratory Abnormality percentage is based on the number of patients who had both baseline and at least one post baseline laboratory measurement for each parameter. LENVIMA with Everolimus (n = 62), Everolimus (n = 50).		

Hepatocellular Carcinoma

The safety of LENVIMA was evaluated in REFLECT, which randomized (1:1) patients with unresectable hepatocellular carcinoma (HCC) to LENVIMA (n=476) or sorafenib (n=475) [see *Clinical Studies (14.3)*]. The dose of LENVIMA was 12 mg orally once daily for patients with a baseline body weight of ≥ 60 kg and 8 mg orally once daily for patients with a baseline body weight of < 60 kg. The dose of sorafenib was 400 mg orally twice daily. Duration of treatment was ≥ 6 months in 49% and 32% of patients in the LENVIMA and sorafenib groups, respectively. Among the 476 patients who received LENVIMA in REFLECT, the median age was 63 years, 85% were men, 28% were White and 70% were Asian.

The most common adverse reactions observed in the LENVIMA-treated patients ($\geq 20\%$) were, in order of decreasing frequency, hypertension, fatigue, diarrhea, decreased appetite, arthralgia/myalgia, decreased weight, abdominal pain, palmar-plantar erythrodysesthesia syndrome, proteinuria, dysphonia, hemorrhagic events, hypothyroidism, and nausea.

The most common serious adverse reactions ($\geq 2\%$) in LENVIMA-treated patients were hepatic encephalopathy (5%), hepatic failure (3%), ascites (3%), and decreased appetite (2%).

Adverse reactions led to dose reduction or interruption in 62% of patients receiving LENVIMA. The most common adverse reactions ($\geq 5\%$) resulting in dose reduction or interruption of LENVIMA were fatigue (9%), decreased appetite (8%), diarrhea (8%), proteinuria (7%), hypertension (6%), and palmar-plantar erythrodysesthesia syndrome (5%).

Treatment discontinuation due to adverse reactions occurred in 20% of patients in the LENVIMA-treated group. The most common adverse reactions ($\geq 1\%$) resulting in discontinuation of LENVIMA were fatigue (1%), hepatic encephalopathy (2%), hyperbilirubinemia (1%), and hepatic failure (1%).

Table 9 summarizes the adverse reactions that occurred in $\geq 10\%$ of patients receiving LENVIMA in REFLECT. REFLECT was not designed to demonstrate a statistically significant reduction in adverse reaction rates for LENVIMA, as compared to sorafenib, for any specified adverse reaction listed in Table 9.

Table 9: Adverse Reactions Occurring in $\geq 10\%$ of Patients in the LENVIMA Arm in REFLECT (HCC)				
Adverse Reaction	LENVIMA 8 mg/12 mg N=476		Sorafenib 800 mg N=475	
	Grade 1-4 (%)	Grade 3-4 (%)	Grade 1-4 (%)	Grade 3-4 (%)
Endocrine				
Hypothyroidism ^a	21	0	3	0
Gastrointestinal				
Diarrhea	39	4	46	4
Abdominal pain ^b	30	3	28	4
Nausea	20	1	14	1
Vomiting	16	1	8	1
Constipation	16	1	11	0
Ascites ^c	15	4	11	3
Stomatitis ^d	11	0.4	14	1
General				
Fatigue ^e	44	7	36	6
Pyrexia ^f	15	0	14	0.2
Peripheral edema	14	1	7	0.2
Metabolism and Nutrition				
Decreased appetite	34	5	27	1
Decreased weight	31	8	22	3
Musculoskeletal and Connective Tissue				
Arthralgia/Myalgia ^g	31	1	20	2
Nervous System				
Headache	10	1	8	0
Renal and Urinary				
Proteinuria ^h	26	6	12	2
Respiratory, Thoracic and Mediastinal				
Dysphonia	24	0.2	12	0
Skin and Subcutaneous Tissue				
Palmar-plantar erythrodysesthesia syndrome	27	3	52	11
Rash ⁱ	14	0	24	2
Vascular				
Hypertension ^j	45	24	31	15
Hemorrhagic events ^k	23	4	15	4
<p>a Includes hypothyroidism, blood thyroid stimulating hormone increased.</p> <p>b Includes abdominal discomfort, abdominal pain, abdominal tenderness, epigastric discomfort, gastrointestinal pain, lower abdominal pain, and upper abdominal pain</p> <p>c Includes ascites and malignant ascites</p>				

Table 9: Adverse Reactions Occurring in $\geq 10\%$ of Patients in the LENVIMA Arm in REFLECT (HCC)				
Adverse Reaction	LENVIMA 8 mg/12 mg N=476		Sorafenib 800 mg N=475	
	Grade 1-4 (%)	Grade 3-4 (%)	Grade 1-4 (%)	Grade 3-4 (%)
d	Includes aphthous ulcer, gingival erosion, gingival ulceration, glossitis, mouth ulceration, oral mucosal blistering, and stomatitis			
e	Includes asthenia, fatigue, lethargy and malaise			
f	Includes increased body temperature, pyrexia			
g	Includes arthralgia, back pain, extremity pain, musculoskeletal chest pain, musculoskeletal discomfort, musculoskeletal pain, and myalgia			
h	Includes proteinuria, increased urine protein, protein urine present			
i	Includes erythema, erythematous rash, exfoliative rash, genital rash, macular rash, maculo-papular rash, papular rash, pruritic rash, pustular rash and rash			
j	Includes increased diastolic blood pressure, increased blood pressure, hypertension and orthostatic hypertension			
k	Includes all hemorrhage terms. Hemorrhage terms that occurred in 5 or more subjects in either treatment group include: epistaxis, hematuria, gingival bleeding, hemoptysis, esophageal varices hemorrhage, hemorrhoidal hemorrhage, mouth hemorrhage, rectal hemorrhage and upper gastrointestinal hemorrhage			

In Table 10, Grade 3-4 laboratory abnormalities occurring in $\geq 2\%$ of patients in the LENVIMA arm in REFLECT (HCC) are presented.

Table 10: Grade 3-4 Laboratory Abnormalities Occurring in $\geq 2\%$ of Patients in the LENVIMA Arm^{a,b} in REFLECT (HCC)		
Laboratory Abnormality	Lenvatinib (%)	Sorafenib (%)
Chemistry		
Increased GGT	17	20
Hyponatremia	15	9
Hyperbilirubinemia	13	10
Increased aspartate aminotransferase (AST)	12	18
Increased alanine aminotransferase (ALT)	8	9
Increased alkaline phosphatase	7	5
Increased lipase	6	17
Hypokalemia	3	4
Hyperkalemia	3	2
Decreased albumin	3	1
Increased creatinine	2	2
Hematology		
Thrombocytopenia	10	8
Lymphopenia	8	9
Neutropenia	7	3
Anemia	4	5
a	With at least 1 grade increase from baseline	
b	Laboratory Abnormality percentage is based on the number of patients who had both baseline and at least one post baseline laboratory measurement for each parameter. LENVIMA (n=278 to 470) and sorafenib (n=260 to 473)	

Endometrial Carcinoma

The safety of LENVIMA in combination with pembrolizumab was investigated in Study 309, a multicenter, open-label, randomized (1:1), active-controlled trial in patients with advanced endometrial carcinoma previously treated with at least one prior platinum-based chemotherapy regimen in any setting, including in the neoadjuvant and adjuvant settings [see *Clinical Studies (14.4)*]. Patients with endometrial carcinoma that are pMMR or not MSI-H received LENVIMA 20 mg orally once daily with pembrolizumab 200 mg intravenously every 3 weeks (n=342); or received doxorubicin or paclitaxel (n= 325).

For patients with pMMR or not MSI-H status, the median duration of study treatment was 7.2 months (range 1 day to 26.8 months) and the median duration of exposure to LENVIMA was 6.7 months (range: 1 day to 26.8 months).

Fatal adverse reactions among these patients occurred in 4.7% of those treated with LENVIMA and pembrolizumab, including 2 cases of pneumonia, and 1 case of the following: acute kidney injury, acute myocardial infarction, colitis, decreased appetite, intestinal perforation, lower gastrointestinal hemorrhage, malignant gastrointestinal obstruction, multiple organ dysfunction syndrome, myelodysplastic syndrome, pulmonary embolism, and right ventricular dysfunction.

Serious adverse reactions occurred in 50% of these patients receiving LENVIMA and pembrolizumab. Serious adverse reactions with frequency $\geq 3\%$ were hypertension (4.4%), and urinary tract infection (3.2%).

Discontinuation of LENVIMA due to an adverse reaction occurred in 26% of these patients. The most common ($\geq 1\%$) adverse reactions leading to discontinuation of LENVIMA were hypertension (2%), asthenia (1.8%), diarrhea (1.2%), decreased appetite (1.2%), proteinuria (1.2%), and vomiting (1.2%).

Dose reductions of LENVIMA due to adverse reactions occurred in 67% of patients. The most common ($\geq 5\%$) adverse reactions resulting in dose reduction of LENVIMA were hypertension (18%), diarrhea (11%), palmar-plantar erythrodysesthesia syndrome (9%), proteinuria (7%), fatigue (7%), decreased appetite (6%), asthenia (5%), and weight decreased (5%).

Dose interruptions of LENVIMA due to an adverse reaction occurred in 58% of these patients. The most common ($\geq 2\%$) adverse reactions leading to interruption of LENVIMA were hypertension (11%), diarrhea (11%), proteinuria (6%), decreased appetite (5%), vomiting (5%), increased alanine aminotransferase (3.5%), fatigue (3.5%), nausea (3.5%), abdominal pain (2.9%), weight decreased (2.6%), urinary tract infection (2.6%), increased aspartate aminotransferase (2.3%), asthenia (2.3%), and palmar-plantar erythrodysesthesia (2%).

Tables 11 and 12 summarize adverse reactions and laboratory abnormalities, respectively, in patients receiving LENVIMA in Study 309.

Table 11: Adverse Reactions in $\geq 20\%$ of Patients Receiving LENVIMA plus Pembrolizumab in Study 309 (EC)				
	Endometrial Carcinoma (pMMR or not MSI-H)			
	LENVIMA 20 mg in combination with Pembrolizumab 200 mg N=342		Doxorubicin or Paclitaxel N=325	
Adverse Reaction	All Grades^a (%)	Grades 3-4 (%)	All Grades^a (%)	Grades 3-4 (%)
Endocrine				
Hypothyroidism ^b	67	0.9	0.9	0
Vascular				
Hypertension ^c	67	39	6	2.5
Hemorrhagic events ^d	25	2.6	15	0.9
General				
Fatigue ^e	58	11	54	6
Gastrointestinal				
Diarrhea ^f	55	8	20	2.8
Nausea	49	2.9	47	1.5
Vomiting	37	2.3	21	2.2
Stomatitis ^g	35	2.6	26	1.2
Abdominal pain ^h	34	2.6	21	1.2
Constipation	27	0	25	0.6
Musculoskeletal and Connective Tissue				
Musculoskeletal disorders ⁱ	53	5	27	0.6
Metabolism				
Decreased appetite ^j	44	7	21	0
Investigations				
Decreased weight	34	10	6	0.3
Renal and Urinary				
Proteinuria ^k	29	6	3.4	0.3
Infections				
Urinary tract infection ^l	31	5	13	1.2
Nervous System				
Headache	26	0.6	9	0.3
Respiratory, Thoracic and Mediastinal				
Dysphonia	22	0	0.6	0
Skin and Subcutaneous Tissue				
Palmar-plantar erythrodysesthesia ^m	23	2.9	0.9	0
Rash ⁿ	20	2.3	4.9	0

Table 11: Adverse Reactions in $\geq 20\%$ of Patients Receiving LENVIMA plus Pembrolizumab in Study 309 (EC)				
	Endometrial Carcinoma (pMMR or not MSI-H)			
	LENVIMA 20 mg in combination with Pembrolizumab 200 mg N=342		Doxorubicin or Paclitaxel N=325	
Adverse Reaction	All Grades^a (%)	Grades 3-4 (%)	All Grades^a (%)	Grades 3-4 (%)
a	Graded per NCI CTCAE v4.03			
b	Includes hypothyroidism, blood thyroid stimulating hormone increased, thyroiditis, primary hypothyroidism, and secondary hypothyroidism			
c	Includes hypertension, blood pressure increased, hypertensive crisis, secondary hypertension, blood pressure abnormal, hypertensive encephalopathy, and blood pressure fluctuation			
d	Includes epistaxis, vaginal hemorrhage, hematuria, gingival bleeding, metrorrhagia, rectal hemorrhage, contusion, hematochezia, cerebral hemorrhage, conjunctival hemorrhage, gastrointestinal hemorrhage, hemoptysis, hemorrhage urinary tract, lower gastrointestinal hemorrhage, mouth hemorrhage, petechiae, uterine hemorrhage, anal hemorrhage, blood blister, eye hemorrhage, hematoma, hemorrhage intracranial, hemorrhagic stroke, injection site hemorrhage, melena, purpura, stoma site hemorrhage, upper gastrointestinal hemorrhage, wound hemorrhage, blood urine present, coital bleeding, ecchymosis, hematemesis, hemorrhage subcutaneous, hepatic hematoma, injection site bruising, intestinal hemorrhage, laryngeal hemorrhage, pulmonary hemorrhage, subdural hematoma, umbilical hemorrhage, and vessel puncture site bruise			
e	Includes fatigue, asthenia, malaise, and lethargy			
f	Includes diarrhea and gastroenteritis			
g	Includes stomatitis, mucosal inflammation, oropharyngeal pain, aphthous ulcer, mouth ulceration, cheilitis, oral mucosal erythema, and tongue ulceration			
h	Includes abdominal pain, abdominal pain upper, abdominal pain lower, abdominal discomfort, gastrointestinal pain, abdominal tenderness, and epigastric discomfort			
i	Includes arthralgia, myalgia, back pain, pain in extremity, bone pain, neck pain, musculoskeletal pain, arthritis, musculoskeletal chest pain, musculoskeletal stiffness, non-cardiac chest pain, pain in jaw			
j	Includes decreased appetite and early satiety			
k	Includes proteinuria, protein urine present, hemoglobinuria			
l	Includes urinary tract infection, cystitis, and pyelonephritis			
m	Includes palmar-plantar erythrodysesthesia syndrome, palmar erythema, plantar erythema, and skin reaction			
n	Includes rash, rash maculo-papular, rash pruritic, rash erythematous, rash macular, rash pustular, rash papular, rash vesicular, and application site rash			

Table 12: Laboratory Abnormalities Worsened from Baseline^a Occurring in $\geq 20\%$ (All Grades) or $\geq 3\%$ (Grades 3-4) of Patients Receiving LENVIMA plus Pembrolizumab in Study 309 (EC)				
	Endometrial Carcinoma (pMMR or not MSI-H)			
	LENVIMA 20 mg in combination with Pembrolizumab 200 mg N=342		Doxorubicin or Paclitaxel N=325	
Laboratory Test^b	All Grades^c (%)	Grades 3-4 (%)	All Grades^c (%)	Grades 3-4 (%)
Chemistry				
Hypertriglyceridemia	70	6	45	1.7
Hypoalbuminemia	60	2.7	42	1.6
Increased aspartate aminotransferase	58	9	23	1.6
Hyperglycemia	58	8	45	4.4
Hypomagnesemia	53	6	32	3.8
Increased alanine aminotransferase	55	9	21	1.2
Hypercholesteremia	53	3.2	23	0.7
Hyponatremia	46	15	28	7
Increased alkaline phosphatase	43	4.7	18	0.9
Hypocalcemia	40	4.7	21	1.7
Increased lipase	36	14	13	3.9
Increased creatinine	35	4.7	18	1.9
Hypokalemia	34	10	24	5
Hypophosphatemia	26	8	17	3.2
Increased amylase	25	7	8	1
Hyperkalemia	23	2.4	12	1.2
Increased creatine kinase	19	3.7	7	0
Increased bilirubin	18	3.6	6	1.6
Hematology				
Lymphopenia	50	16	65	20
Thrombocytopenia	50	8	30	4.7
Anemia	49	8	84	14
Leukopenia	43	3.5	83	43
Neutropenia	31	6	76	58
<p>^a With at least 1 grade increase from baseline</p> <p>^b Laboratory abnormality percentage is based on the number of patients who had both baseline and at least one post-baseline laboratory measurement for each parameter: LENVIMA/pembrolizumab (range: 263 to 340 patients) and doxorubicin or paclitaxel (range: 240 to 322 patients).</p> <p>^c Graded per NCI CTCAE v4.03</p>				

6.2 Postmarketing Experience

The following adverse reactions have been identified during post-approval use of LENVIMA. Because these reactions are reported voluntarily from a population of uncertain size, it is not always possible to reliably estimate their frequency or establish a causal relationship to drug exposure.

Gastrointestinal: pancreatitis, increased amylase

General: impaired wound healing

Hepatobiliary: cholecystitis

Renal and Urinary: nephrotic syndrome

Vascular: arterial (including aortic) aneurysms, dissections, and rupture

7 DRUG INTERACTIONS

7.1 Drugs That Prolong the QT Interval

LENVIMA has been reported to prolong the QT/QTc interval. Avoid coadministration of LENVIMA with medicinal products with a known potential to prolong the QT/QTc interval [see *Warnings and Precautions (5.9)*].

8 USE IN SPECIFIC POPULATIONS

8.1 Pregnancy

Risk Summary

Based on findings from animal studies and its mechanism of action, LENVIMA can cause fetal harm when administered to a pregnant woman [see *Clinical Pharmacology (12.1)*]. In animal reproduction studies, oral administration of lenvatinib during organogenesis at doses below the recommended human doses resulted in embryotoxicity, fetotoxicity, and teratogenicity in rats and rabbits (see *Data*). There are no available human data informing the drug-associated risk. Advise pregnant women of the potential risk to a fetus.

In the U.S. general population, the estimated background risk of major birth defects and miscarriage in clinically recognized pregnancies is 2% to 4% and 15% to 20%, respectively.

Data

Animal Data

In an embryofetal development study, daily oral administration of lenvatinib mesylate at doses ≥ 0.3 mg/kg [approximately 0.14 times the recommended clinical dose of 24 mg based on body surface area (BSA)] to pregnant rats during organogenesis resulted in dose-related decreases in mean fetal body weight, delayed fetal ossifications, and dose-related increases in fetal external (parietal edema and tail abnormalities), visceral, and skeletal anomalies. Greater than 80% postimplantation loss was observed at 1.0 mg/kg/day (approximately 0.5 times the recommended clinical dose of 24 mg based on BSA).

Daily oral administration of lenvatinib mesylate to pregnant rabbits during organogenesis resulted in fetal external (short tail), visceral (retroesophageal subclavian artery), and skeletal anomalies at doses greater than or equal to 0.03 mg/kg (approximately 0.03 times the recommended clinical dose of 24 mg based on BSA). At the 0.03 mg/kg dose, increased post-implantation loss, including 1 fetal death, was also observed. Lenvatinib was abortifacient in rabbits, resulting in late abortions in approximately one-third of the rabbits treated at a dose

level of 0.5 mg/kg/day (approximately 0.5 times the recommended clinical dose of 24 mg based on BSA).

8.2 Lactation

Risk Summary

It is not known whether LENVIMA is present in human milk; however, lenvatinib and its metabolites are excreted in rat milk at concentrations higher than those in maternal plasma (*see Data*). Because of the potential for serious adverse reactions in breastfed children, advise women to discontinue breastfeeding during treatment with LENVIMA and for 1 week after the last dose.

Data

Animal Data

Following administration of radiolabeled lenvatinib to lactating Sprague Dawley rats, lenvatinib-related radioactivity was approximately 2 times higher [based on area under the curve (AUC)] in milk compared to maternal plasma.

8.3 Females and Males of Reproductive Potential

Based on animal data and its mechanism of action, LENVIMA can cause fetal harm when administered to a pregnant woman [*see Use in Specific Populations (8.1)*].

Pregnancy Testing

Verify the pregnancy status of females of reproductive potential prior to initiating LENVIMA [*see Use in Specific Populations (8.1)*].

Contraception

Females

Advise females of reproductive potential of the potential risk to a fetus and to use effective contraception during treatment with LENVIMA and for 30 days after the last dose.

Infertility

LENVIMA may impair fertility in males and females of reproductive potential [*see Nonclinical Toxicology (13.1)*].

8.4 Pediatric Use

The safety and effectiveness of LENVIMA in pediatric patients have not been established.

Juvenile Animal Data

Daily oral administration of lenvatinib mesylate to juvenile rats for 8 weeks starting on postnatal day 21 (approximately equal to a human pediatric age of 2 years) resulted in growth retardation (decreased body weight gain, decreased food consumption, and decreases in the width and/or length of the femur and tibia) and secondary delays in physical development and reproductive organ immaturity at doses greater than or equal to 2 mg/kg (approximately 1.2 to 5 times the human exposure based on AUC at the recommended clinical dose of 24 mg). Decreased length of the femur and tibia persisted following 4 weeks of recovery. In general, the toxicologic profile of lenvatinib was similar between juvenile and adult rats, though toxicities including broken teeth at all dose levels and mortality at the 10 mg/kg/day dose level (attributed to primary duodenal lesions) occurred at earlier treatment time-points in juvenile rats.

8.5 Geriatric Use

Of the 261 patients with differentiated thyroid cancer (DTC) who received LENVIMA in SELECT, 45% were ≥ 65 years of age and 11% were ≥ 75 years of age. No overall differences in safety or effectiveness were observed between these subjects and younger subjects.

Of the 352 patients with renal cell carcinoma (RCC) who received LENVIMA with pembrolizumab in CLEAR, 45% were ≥ 65 years of age and 13% were ≥ 75 years of age. No overall differences in safety or effectiveness were observed between these elderly patients and younger patients.

Of the 62 patients with RCC who received LENVIMA with everolimus in Study 205, 36% were ≥ 65 years of age. Conclusions are limited due to the small sample size, but there appeared to be no overall differences in safety or effectiveness between these subjects and younger subjects.

Of the 476 patients with hepatocellular carcinoma (HCC) who received LENVIMA in REFLECT, 44% were ≥ 65 years of age and 12% were ≥ 75 years of age. No overall differences in safety or effectiveness were observed between patients ≥ 65 and younger subjects. Patients ≥ 75 years of age showed reduced tolerability to LENVIMA.

Of 406 adult patients with endometrial carcinoma (EC) who were treated with LENVIMA in combination with pembrolizumab in Study 309, 201 (50%) were 65 years and over. No overall differences in safety or effectiveness were observed between elderly patients and younger patients.

8.6 Renal Impairment

No dose adjustment is recommended for patients with mild (CLcr 60-89 mL/min) or moderate (CLcr 30-59 mL/min) renal impairment. Lenvatinib concentrations may increase in patients with DTC, RCC, or endometrial carcinoma and severe (CLcr 15-29 mL/min) renal impairment. Reduce the dose of lenvatinib for patients with RCC, DTC, or endometrial carcinoma and severe renal impairment [*see Dosage and Administration (2.7)*]. There is no recommended dose of LENVIMA for patients with HCC and severe renal impairment. LENVIMA has not been studied in patients with end stage renal disease [*see Warnings and Precautions (5.5), Clinical Pharmacology (12.3)*].

8.7 Hepatic Impairment

No dose adjustment is recommended for patients with HCC and mild hepatic impairment (Child-Pugh A). There is no recommended dose for patients with HCC with moderate or severe hepatic impairment.

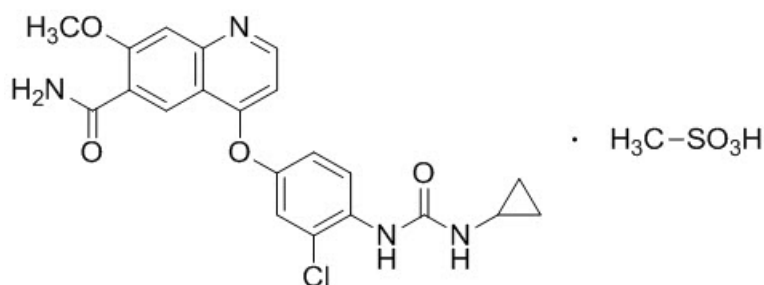
No dose adjustment is recommended for patients with DTC, RCC, or endometrial carcinoma and mild or moderate hepatic impairment (Child-Pugh A or B). Lenvatinib concentrations may increase in patients with DTC, RCC, or endometrial carcinoma and severe hepatic impairment (Child-Pugh C). Reduce the dose of lenvatinib for patients with DTC, RCC, or endometrial carcinoma and severe hepatic impairment [see *Dosage and Administration* (2.7), *Clinical Pharmacology* (12.3)].

10 OVERDOSAGE

Due to the high plasma protein binding, lenvatinib is not expected to be dialyzable [see *Clinical Pharmacology* (12.3)]. Death due to multiorgan dysfunction occurred in a patient who received a single dose of LENVIMA 120 mg orally.

11 DESCRIPTION

LENVIMA, a kinase inhibitor, is the mesylate salt of lenvatinib. Its chemical name is 4-[3-chloro-4-(*N*⁷-cyclopropylureido)phenoxy]-7-methoxyquinoline-6-carboxamide methanesulfonate. The molecular formula is C₂₁H₁₉ClN₄O₄ • CH₄O₃S, and the molecular weight of the mesylate salt is 522.96. The chemical structure of lenvatinib mesylate is:



Lenvatinib mesylate is a white to pale reddish yellow powder. It is slightly soluble in water and practically insoluble in ethanol (dehydrated). The dissociation constant (pK_a value) of lenvatinib mesylate is 5.05 at 25°C. The partition coefficient (log P value) is 3.3.

LENVIMA capsules for oral administration contain 4 mg or 10 mg of lenvatinib, equivalent to 4.90 mg or 12.25 mg of lenvatinib mesylate, respectively. The inactive ingredients are: calcium carbonate, hydroxypropyl cellulose, low-substituted hydroxypropyl cellulose, mannitol, microcrystalline cellulose, and talc.

In addition, the capsule shell contains ferric oxide red, ferric oxide yellow, hypromellose, and titanium dioxide. The printing ink contains black iron oxide, potassium hydroxide, propylene glycol, and shellac.

12 CLINICAL PHARMACOLOGY

12.1 Mechanism of Action

Lenvatinib is a kinase inhibitor that inhibits the kinase activities of vascular endothelial growth factor (VEGF) receptors VEGFR1 (FLT1), VEGFR2 (KDR), and VEGFR3 (FLT4). Lenvatinib inhibits other kinases that have been implicated in pathogenic angiogenesis, tumor growth, and cancer progression in addition to their normal cellular functions, including fibroblast growth factor (FGF) receptors FGFR1, 2, 3, and 4; platelet derived growth factor receptor alpha (PDGFR α), KIT, and RET. Lenvatinib also exhibited antiproliferative activity in hepatocellular carcinoma cell lines dependent on activated FGFR signaling with a concurrent inhibition of FGF-receptor substrate 2 α (FRS2 α) phosphorylation.

In syngeneic mouse tumor models, lenvatinib decreased tumor-associated macrophages, increased activated cytotoxic T cells, and demonstrated greater antitumor activity in combination with an anti-PD-1 monoclonal antibody compared to either treatment alone.

The combination of lenvatinib and everolimus showed increased antiangiogenic and antitumor activity as demonstrated by decreases in human endothelial cell proliferation, tube formation, and VEGF signaling in vitro, and by decreases in tumor volume in mouse xenograft models of human renal cell cancer that were greater than those with either drug alone.

12.2 Pharmacodynamics

Exposure-Response Relationships

In a multicenter randomized (1:1) double blind trial of 152 patients with radioactive iodine (RAI)-refractory DTC, a dose-response relationship for overall response rate (ORR) was observed over the dose range of 18 mg (0.75 times the recommended dose of 24 mg) and 24 mg. A higher ORR was observed at the recommended lenvatinib dose.

No dose-response relationships for adverse reactions, serious adverse reactions, adverse reactions leading to study drug discontinuation, and adverse reactions leading to study drug interruption were observed over the same dose range.

12.3 Pharmacokinetics

In patients with solid tumors administered single and multiple doses of LENVIMA once daily, the maximum lenvatinib plasma concentration (C_{max}) and the area under the concentration-time curve (AUC) increased proportionally over the dose range of 3.2 mg (0.1 times the recommended clinical dose of 24 mg) to 32 mg (1.33 times the recommended clinical dose of 24 mg) with a median accumulation index of 0.96 (20 mg) to 1.54 (6.4 mg).

Geometric mean C_{max} and AUC values at steady state for RCC, DTC and HCC are summarized in the Table 13.

Table 13: Lenvatinib C_{max} and AUC in Patients with Solid Tumors^a					
Tumor Type	Dose	Parameter	N	Geometric Mean	%CV
RCC	18 mg	C_{max} (ng/mL)	350	267	36.7
		AUC (ng·h/mL)	350	3148	42.5
	20 mg	C_{max} (ng/mL)	346	275	32.6
		AUC (ng·h/mL)	346	3135	41.3
DTC	24 mg	C_{max} (ng/mL)	251	323	33.3
		AUC (ng·h/mL)	251	3483	34.7
HCC (body weight < 60 kg)	8 mg	C_{max} (ng/mL)	150	154	25.4
		AUC (ng·h/mL)	150	1835	34.0
HCC (body weight ≥ 60 kg)	12 mg	C_{max} (ng/mL)	318	172	23.1
		AUC (ng·h/mL)	318	2013	29.3

^a Model-predicted steady-state pharmacokinetic parameters are presented.

Absorption

The time to peak plasma concentration (T_{max}) typically occurred from 1 to 4 hours post-dose.

Food Effect

Administration with a high fat meal (approximately 900 calories of which approximately 55% were from fat, 15% from protein, and 30% from carbohydrates) did not affect the extent of absorption, but decreased the rate of absorption and delayed the median T_{max} from 2 hours to 4 hours.

Distribution

Model-predicted geometric mean steady state volume of distribution is 97 L (%CV, 30.2%). Protein binding of lenvatinib is 97% to 99%, which is independent of concentration, and is not impacted by hepatic or renal function. The blood-to-plasma concentration ratio ranged from 0.59 to 0.61 at concentrations of 0.1 to 10 $\mu\text{g/mL}$ in vitro.

Elimination

The terminal elimination half-life of lenvatinib was approximately 28 hours.

Metabolism

The main metabolic pathways for lenvatinib in humans were identified as enzymatic (CYP3A and aldehyde oxidase) and non-enzymatic processes.

Excretion

Ten days after a single administration of radiolabeled lenvatinib, approximately 64% and 25% of the radiolabel were eliminated in the feces and urine, respectively.

Specific Populations

Age (18 to 92 years), sex, race/ethnicity (White, Black and Asian), tumor types (DTC, RCC, HCC and other tumor types) and renal impairment (creatinine clearance: 15-89 mL/min) did not have a significant effect on apparent oral clearance (CL/F). Subjects with end stage renal disease were not studied.

Patients with Hepatic Impairment

The pharmacokinetics of lenvatinib following a single 10 mg dose were evaluated in subjects with mild (Child-Pugh A) or moderate (Child-Pugh B) hepatic impairment. The pharmacokinetics of a single 5 mg dose were evaluated in subjects with severe (Child-Pugh C) hepatic impairment. Compared to subjects with normal hepatic function, the dose-adjusted $AUC_{0-\text{inf}}$ of lenvatinib for subjects with mild, moderate, and severe hepatic impairment were 119%, 107%, and 180%, respectively.

Apparent oral clearance of lenvatinib in patients with HCC and mild hepatic impairment was similar to patients with HCC and moderate hepatic impairment.

Body Weight

Lenvatinib exposures in patients with HCC in REFLECT were comparable between those weighing <60 kg who received a starting dose of 8 mg and those \geq 60 kg who received a starting dose of 12 mg.

Drug Interaction Studies

Effect of Other Drugs on Lenvatinib

CYP3A, P-gp, and BCRP Inhibitors: Ketoconazole (400 mg daily for 18 days) increased lenvatinib (administered as a single 5 mg dose on Day 5) AUC by 15% and C_{max} by 19%.

P-gp Inhibitor: Rifampicin (600 mg as a single dose) increased lenvatinib (24 mg as a single dose) AUC by 31% and C_{max} by 33%.

CYP3A and P-gp Inducers: Rifampicin (600 mg daily for 21 days) decreased lenvatinib (24 mg as a single dose on Day 15) AUC by 18%. The C_{max} was unchanged.

Population pharmacokinetic analysis demonstrated that neither everolimus nor pembrolizumab meaningfully affect the pharmacokinetics of lenvatinib.

In Vitro Studies with Transporters: Lenvatinib is a substrate of P-gp and BCRP but not a substrate for organic anion transporter (OAT) 1, OAT3, organic anion transporting polypeptide (OATP) 1B1, OATP1B3, organic cation transporter (OCT) 1, OCT2, multidrug and toxin extrusion (MATE) 1, MATE2-K, or the bile salt export pump (BSEP).

Effect of Lenvatinib on Other Drugs

CYP2C8 Substrate: There is no projected significant drug-drug interaction risk between lenvatinib and repaglinide.

CYP3A4 Substrate: Co-administration of lenvatinib with midazolam had no effect on the pharmacokinetics of midazolam.

Population pharmacokinetic analysis demonstrated that lenvatinib does not meaningfully affect the pharmacokinetics of either everolimus or pembrolizumab.

In Vitro Studies with Substrates of CYP or UDP-glucuronosyltransferase (UGT): Lenvatinib inhibits CYP2C8, CYP1A2, CYP2B6, CYP2C9, CYP2C19, CYP2D6, and CYP3A. Lenvatinib does not inhibit CYP2A6 and CYP2E1. Lenvatinib induces CYP3A, but it does not induce CYP1A1, CYP1A2, CYP2B6, and CYP2C9.

Lenvatinib inhibits UGT1A1, UGT1A4, and UGT1A9 in vitro, but likely only inhibits UGT1A1 in vivo in the gastrointestinal tract based on the expression of the enzyme in tissues. Lenvatinib does not inhibit UGT1A6, UGT2B7 or aldehyde oxidase. Lenvatinib does not induce UGT1A1, UGT1A4, UGT1A6, UGT1A9, or UGT2B7.

In Vitro Studies with Substrates of Transporters:

Lenvatinib does not have the potential to inhibit MATE1, MATE2-K, OCT1, OCT2, OAT1, OAT3, BSEP, OATP1B1, or OATP1B3 in vivo.

13 NONCLINICAL TOXICOLOGY

13.1 Carcinogenesis, Mutagenesis, Impairment of Fertility

Carcinogenicity studies have not been conducted with lenvatinib. Lenvatinib mesylate was not mutagenic in the in vitro bacterial reverse mutation (Ames) assay. Lenvatinib was not clastogenic in the in vitro mouse lymphoma thymidine kinase assay or the in vivo rat micronucleus assay.

No specific studies with lenvatinib have been conducted in animals to evaluate the effect on fertility; however, results from general toxicology studies in rats, monkeys, and dogs suggest there is a potential for lenvatinib to impair fertility. Male dogs exhibited testicular

hypocellularity of the seminiferous epithelium and desquamated seminiferous epithelial cells in the epididymides at lenvatinib exposures approximately 0.02 to 0.09 times the AUC at the recommended clinical dose of 24 mg once daily. Follicular atresia of the ovaries was observed in monkeys and rats at exposures 0.2 to 0.8 times and 10 to 44 times the AUC at the recommended clinical dose of 24 mg once daily, respectively. In addition, in monkeys, a decreased incidence of menstruation was reported at lenvatinib exposures lower than those observed in humans at the recommended clinical dose of 24 mg once daily.

14 CLINICAL STUDIES

14.1 Differentiated Thyroid Cancer

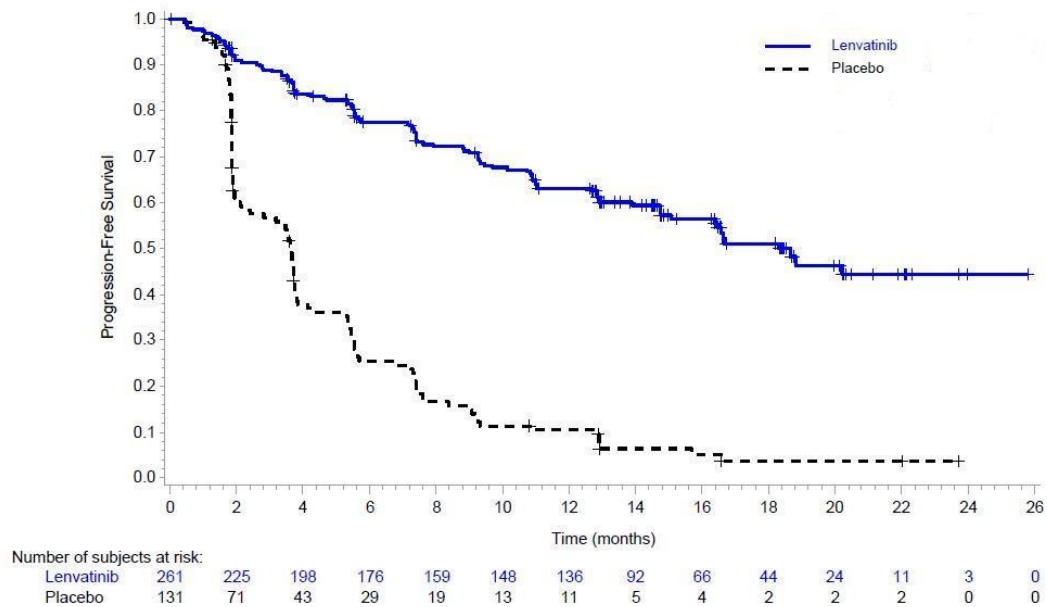
A multicenter, randomized (2:1), double-blind, placebo-controlled study (SELECT; NCT01321554) was conducted in 392 patients with locally recurrent or metastatic radioactive iodine-refractory differentiated thyroid cancer and radiographic evidence of disease progression within 12 months prior to randomization, confirmed by independent radiologic review. Radioactive iodine (RAI)-refractory was defined as 1 or more measurable lesions with no iodine uptake on RAI scan, iodine uptake with progression within 12 months of RAI therapy, or having received cumulative RAI activity >600 mCi (22 GBq) with the last dose administered at least 6 months prior to study entry. Patients were randomized to receive LENVIMA 24 mg once daily (n=261) or placebo (n=131) until disease progression. Randomization was stratified by geographic region, prior VEGF/VEGFR-targeted therapy, and age. The major efficacy outcome measure was progression-free survival (PFS) as determined by blinded independent radiologic review using Response Evaluation Criteria in Solid Tumors (RECIST) 1.1. Independent review confirmation of disease progression was required prior to discontinuing patients from the randomization phase of the study. Other efficacy outcome measures included objective response rate (ORR) and overall survival (OS). Patients in the placebo arm could receive lenvatinib following independent review confirmation of disease progression.

Of the 392 patients randomized, 51% were male, the median age was 63 years, 40% were 65 years or older, 79% were White, 54% had an Eastern Cooperative Oncology Group (ECOG) performance status (PS) of 0, and 24% had received 1 prior VEGF/VEGFR-targeted therapy. Metastases were present in 99% of the patients: lungs in 89%, lymph nodes in 52%, bone in 39%, liver in 18%, and brain in 4%. The histological diagnoses were papillary thyroid cancer (66%) and follicular thyroid cancer (34%); of those with follicular histology, 44% had Hürthle cell and 11% had clear cell subtypes. In the LENVIMA arm, 67% of patients did not demonstrate iodine uptake on any RAI scan compared to 77% in the placebo arm. Additionally, 59% of patients on the LENVIMA arm and 61% of patients on placebo arm progressed, according to RECIST 1.1, within 12 months of prior I 131 therapy; 19.2% of patients on the LENVIMA arm and 17.6% of patients on placebo arm received prior cumulative activity of >600 mCi or 22 GBq I 131, with the last dose administered at least 6 months prior to study entry. The median cumulative RAI activity administered prior to study entry was 350 mCi (12.95 GBq).

A statistically significant prolongation in PFS was demonstrated in LENVIMA-treated patients compared to those receiving placebo (Table 14 and Figure 1). Upon confirmation of progression, 83% of patients that were randomly assigned to placebo crossed over to receive open-label LENVIMA.

Table 14: Efficacy Results in Differentiated Thyroid Cancer in SELECT		
	LENVIMA N=261	Placebo N=131
Progression-Free Survival (PFS)^a		
Number of events (%)	107 (41)	113 (86)
Progressive disease	93 (36)	109 (83)
Death	14 (5)	4 (3)
Median PFS in months (95% CI)	18.3 (15.1, NE)	3.6 (2.2, 3.7)
Hazard ratio (95% CI) ^b	0.21 (0.16, 0.28)	
P-value ^c	<0.001	
Objective Response Rate^a		
Objective response rate	65%	2%
(95% CI)	(59%, 71%)	(0%, 4%)
Complete response	2%	0%
Partial response	63%	2%
P-value ^d	<0.001	
Overall Survival (OS)^e		
Number of deaths (%)	71 (27)	47 (36)
Median OS in months (95% CI)	NE (22.1, NE)	NE (20.3, NE)
Hazard ratio (95% CI) ^b	0.73 (0.50, 1.07)	
P-value ^b	0.10	
<p>a Independent radiologic review</p> <p>b Estimated with Cox proportional hazard model stratified by region (Europe vs North America vs other), age group (≤65 years vs >65 years), and previous VEGF/VEGFR-targeted therapy (0 vs 1)</p> <p>c Log-rank test stratified by region (Europe vs North America vs other), age group (≤65 years vs >65 years), and previous VEGF/VEGFR-targeted therapy (0 vs 1)</p> <p>d Cochran-Mantel-Haenszel chi-square test</p> <p>e NE = Not estimable</p>		

Figure 1: Kaplan-Meier Curves for Progression-Free Survival in SELECT



14.2 Renal Cell Carcinoma

First-Line Treatment of Patients with RCC in Combination with Pembrolizumab (CLEAR)

The efficacy of LENVIMA in combination with pembrolizumab was investigated in CLEAR (NCT02811861), a multicenter, open-label, randomized trial that enrolled 1069 patients with advanced RCC in the first-line setting. Patients were enrolled regardless of PD-L1 tumor expression status. Patients with active autoimmune disease or a medical condition that required immunosuppression were ineligible. Randomization was stratified by geographic region (North America and Western Europe versus “Rest of the World”) and Memorial Sloan Kettering Cancer Center (MSKCC) prognostic groups (favorable, intermediate and poor risk).

Patients were randomized (1:1:1) to one of the following treatment arms:

- LENVIMA 20 mg orally once daily in combination with pembrolizumab 200 mg intravenously every 3 weeks up to 24 months.
- LENVIMA 18 mg orally once daily in combination with everolimus 5 mg orally once daily.
- Sunitinib 50 mg orally once daily for 4 weeks then off treatment for 2 weeks.

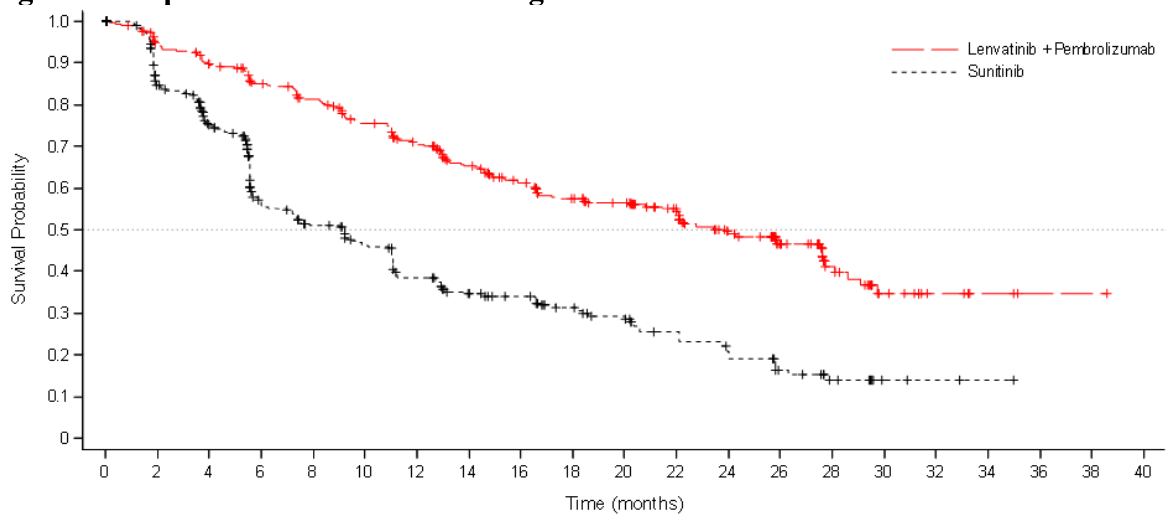
Treatment continued until unacceptable toxicity or disease progression. Administration of LENVIMA with pembrolizumab was permitted beyond RECIST-defined disease progression if the patient was clinically stable and considered by the investigator to be deriving clinical benefit. Pembrolizumab dosing was continued for a maximum of 24 months; however, treatment with LENVIMA could be continued beyond 24 months. Assessment of tumor status was performed at baseline and then every 8 weeks.

The study population characteristics were: median age of 62 years (range: 29 to 88 years); 42% age 65 or older, 75% male; 74% White, 21% Asian, 1% Black, and 2% other races; 18% and 82% of patients had a baseline KPS of 70 to 80 and 90 to 100, respectively; patient distribution by MSKCC risk categories was 27% favorable, 64% intermediate and 9% poor. Common sites of metastases in patients were lung (68%), lymph node (45%), and bone (25%).

The major efficacy outcome measures were PFS, as assessed by independent radiologic review (IRC) according to RECIST v1.1, and OS. Additional efficacy outcome measures included confirmed ORR as assessed by IRC. LENVIMA in combination with pembrolizumab demonstrated statistically significant improvements in PFS, OS, and ORR compared with sunitinib. Table 15 and Figures 2 and 3 summarize the efficacy results for CLEAR.

Table 15: Efficacy Results in Renal Cell Carcinoma Per IRC in CLEAR		
	LENVIMA20 mg with Pembrolizumab 200mg N=355	Sunitinib 50mg N=357
Progression-Free Survival (PFS)		
Number of events, n (%)	160 (45%)	205 (57%)
Progressive disease	145 (41%)	196 (55%)
Death	15 (4%)	9 (3%)
Median PFS in months (95% CI)	23.9 (20.8, 27.7)	9.2 (6.0, 11.0)
Hazard Ratio ^a (95% CI)	0.39 (0.32, 0.49)	
p-value ^b	<0.0001	
Overall Survival (OS)		
Number of deaths, n (%)	80 (23%)	101 (28%)
Median OS in months (95% CI)	NR (33.6, NE)	NR (NE, NE)
Hazard Ratio ^a (95% CI)	0.66 (0.49, 0.88)	
p-value ^b	0.0049	
Objective Response Rate (Confirmed)		
Objective response rate, n (%)	252 (71%)	129 (36%)
(95% CI)	(66, 76)	(31, 41)
Complete response rate	16%	4%
Partial responses rate	55%	32%
p-value ^c	<0.0001	
Tumor assessments were based on RECIST 1.1; only confirmed responses are included for ORR. Data cutoff date = 28 Aug 2020 CI = confidence interval; NE= Not estimable; NR= Not reached		
a Hazard ratio is based on a Cox Proportional Hazards Model, stratified by geographic region and MSKCC prognostic groups.		
b Two-sided p-value based on stratified log-rank test.		
c Two-sided p-value based upon CMH test.		

Figure 2: Kaplan-Meier Curves for Progression-Free Survival in CLEAR

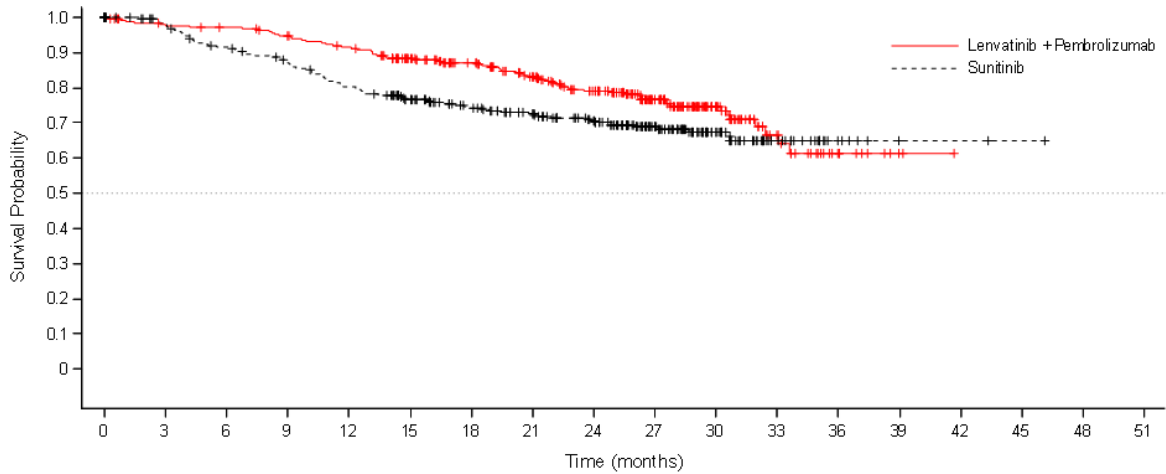


Number of subjects at risk:

L+P	355	321	300	276	259	235	213	186	160	136	126	106	80	56	30	14	6	3	1	1	0
S	357	262	218	145	124	107	85	69	62	49	42	32	25	16	9	3	2	1	0		

L+P = Lenvatinib + Pembrolizumab; S = Sunitinib.

Figure 3: Kaplan-Meier Curves for Overall Survival in CLEAR



Number of subjects at risk:

	0	3	6	9	12	15	18	21	24	27	30	33	36	39	42	45	48	51
L+P	355	342	338	327	313	280	253	222	188	129	66	26	10	2	0			
S	357	332	307	289	264	236	207	186	160	112	60	25	7	2	2	1	0	

L+P = Lenvatinib + Pembrolizumab; S = Sunitinib.

Previously Treated RCC in Combination with Everolimus (Study 205)

The efficacy was evaluated in a multicenter, randomized (1:1:1) study (Study 205: NCT01136733), in which 153 patients with advanced or metastatic renal cell carcinoma who have previously received anti-angiogenic therapy received LENVIMA 18 mg orally once daily with everolimus 5 mg orally once daily, LENVIMA 24 mg orally once daily, or everolimus 10 mg orally once daily. Patients were required to have histological confirmation of clear cell RCC and ECOG PS of 0 or 1. Patients were stratified by hemoglobin level (\leq or >13 g/dL for males and \leq or >11.5 g/dL for females) and corrected serum calcium (≥ 10 mg/dL vs. <10 mg/dL). The major efficacy outcome measure was investigator-assessed PFS evaluated according to RECIST 1.1.

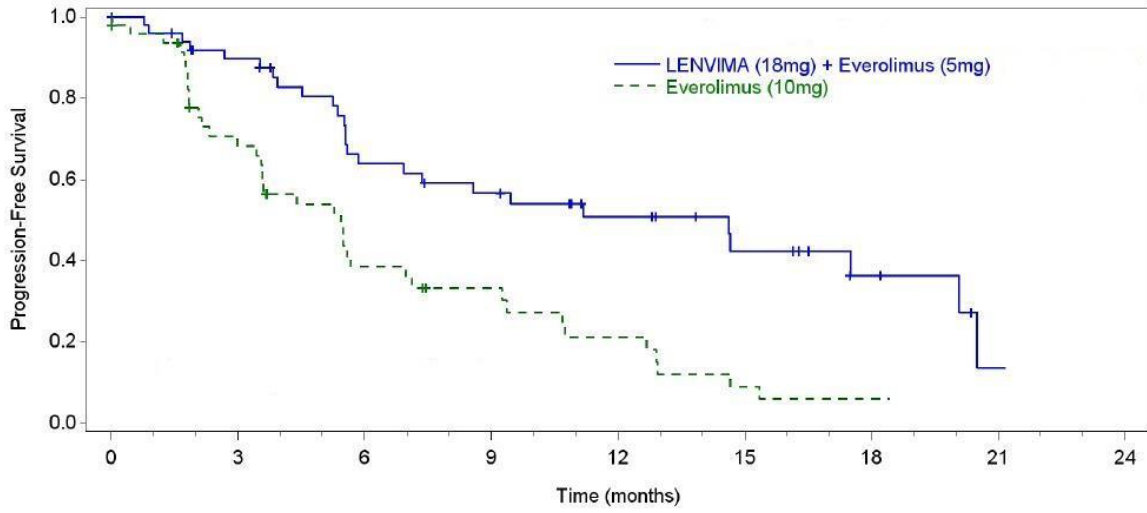
Of the 101 patients randomized to the LENVIMA with everolimus arm or everolimus arm, 72% were male, the median age was 60 years, 31% were older than 65 years, and 96% were White. Metastases were present in 95% of the patients and unresectable advanced disease was present in 5%. All patients had a baseline ECOG PS of either 0 (54%) or 1 (46%) with similar distribution across these two treatment arms. MSKCC favorable, intermediate, and poor risk categories were observed respectively, in 24%, 37%, and 39% of patients in the LENVIMA with everolimus arm, and 24%, 38%, and 38% of patients in the everolimus arm.

Efficacy results from Study 205 are summarized in Table 16 and Figures 4 and 5. The treatment effect of the combination on PFS was supported by a retrospective independent review of radiographs with an observed hazard ratio (HR) of 0.43 (95% CI: 0.24, 0.75) compared with the everolimus arm.

Table 16: Efficacy Results in Renal Cell Carcinoma Per Investigator Assessment in Study 205

	LENVIMA 18 mg with Everolimus 5 mg N=51	Everolimus 10 mg N=50
Progression-Free Survival (PFS)^a		
Number of events, n (%)	26 (51)	37 (74)
Progressive disease	21 (41)	35 (70)
Death	5 (10)	2 (4)
Median PFS in months (95% CI)	14.6 (5.9, 20.1)	5.5 (3.5, 7.1)
Hazard Ratio (95% CI) ^b LENVIMA with Everolimus vs Everolimus	0.37 (0.22, 0.62)	-
Overall Survival (OS)^c		
Number of deaths, n (%)	32 (63)	37 (74)
Median OS in months (95% CI)	25.5 (16.4, 32.1)	15.4 (11.8, 20.6)
Hazard Ratio (95% CI) ^b LENVIMA with Everolimus vs Everolimus	0.67 (0.42, 1.08)	-
Objective Response Rate (Confirmed)		
Objective response rate, n (%)	19 (37)	3 (6)
(95% CI)	(24, 52)	(1, 17)
Number of complete responses, n (%)	1 (2)	0
Number of partial responses (%)	18 (35)	3 (6)
Tumor assessments were based on RECIST v1.1 criteria for progression but only confirmed responses are included for ORR. Data cutoff date = 13 Jun 2014		
CI = confidence interval		
a Point estimates are based on Kaplan-Meier method and 95% CIs are based on the Greenwood formula using log-log transformation.		
b Hazard ratio is based on a stratified Cox regression model including treatment as a covariate factor and hemoglobin and corrected serum calcium as strata.		
c Data cutoff date = 31 Jul 2015		

Figure 4: Kaplan-Meier Curves for Progression-Free Survival in Study 205

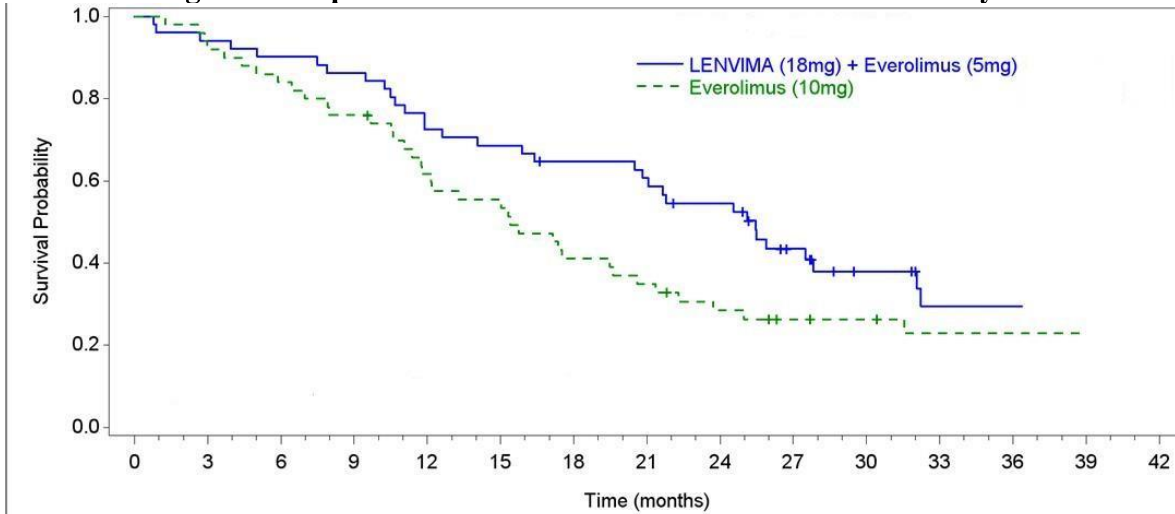


Number of Subjects at risk:

L(18mg) + E(5mg)	51	41	27	23	16	10	5	1	0
E(10mg)	50	29	15	11	7	3	1	0	0

L(18mg) + E(5mg)=LENVIMA 18mg + Everolimus 5mg; E(10mg)=Everolimus 10mg
Data Cutoff Date: 13JUN2014

Figure 5: Kaplan-Meier Curves for Overall Survival in Study 205



Number of Subjects at risk:

L(18mg) + E(5mg)	51	48	46	44	37	35	32	30	26	17	11	7	2	0	0
E(10mg)	50	46	42	38	30	27	20	17	13	10	9	5	1	0	0

L(18mg) + E(5mg)=LENVIMA 18mg + Everolimus 5mg; E(10mg)=Everolimus 10mg
Data Cutoff Date: 31JUL2015

14.3 Hepatocellular Carcinoma

The efficacy of LENVIMA was evaluated in a randomized, open-label, multicenter, international study (REFLECT; NCT01761266) conducted in patients with previously untreated unresectable hepatocellular carcinoma (HCC). The study enrolled adults with Child-Pugh A and Barcelona Clinic Liver Cancer (BCLC) Stage C or B HCC who were ineligible for local liver-directed therapy; had an ECOG PS of 0 or 1; had received no prior systemic therapy for HCC; and had at least one measurable target lesion according to modified RECIST for HCC.

Patients were randomized (1:1) to receive LENVIMA (12 mg for baseline body weight ≥ 60 kg or 8 mg for baseline body weight < 60 kg) orally once daily or sorafenib 400 mg orally twice daily until radiological disease progression or unacceptable toxicity. Randomization was stratified by region (Western vs Asia Pacific), presence of macroscopic portal vein invasion or extrahepatic spread (yes vs no), ECOG PS (0 vs 1), and body weight (< 60 kg vs ≥ 60 kg). The major efficacy outcome measure was overall survival (OS). REFLECT was designed to show the non-inferiority of LENVIMA to sorafenib for OS. Additional efficacy outcome measures were progression-free survival (PFS) and objective response rate (ORR) according to modified RECIST for HCC.

A total of 954 patients were randomized, 478 to the LENVIMA arm and 476 to the sorafenib arm. The demographics of the study population were: median age of 62 years (range: 20 to 88 years); 84% male; 69% Asian and 29% White; 63% ECOG PS of 0; and 69% weighed ≥ 60 kg. Of the 590 (62%) patients with at least one site of documented distant metastatic disease, 52% had lung metastasis, 45% had lymph node metastasis, and 16% had bone metastasis.

Macroscopic portal vein invasion, extra-hepatic spread, or both were present in 70% of patients. HCC was categorized as Child-Pugh A and BCLC Stage C in 79% and Child-Pugh A and BCLC Stage B in 21% of patients. Seventy-five percent (75%) of patients had radiographic evidence of cirrhosis at baseline. Investigator-documented primary risk factors for the development of HCC were hepatitis B (50%), hepatitis C (23%), alcohol use (6%), other (7%), and unknown (14%).

REFLECT demonstrated that LENVIMA was non-inferior to sorafenib for OS. REFLECT did not demonstrate a statistically significant improvement in OS for patients randomized to LENVIMA as compared to those in the sorafenib arm. LENVIMA was statistically significantly superior to sorafenib for PFS and ORR. Efficacy results are summarized in Table 17 and Figure 6.

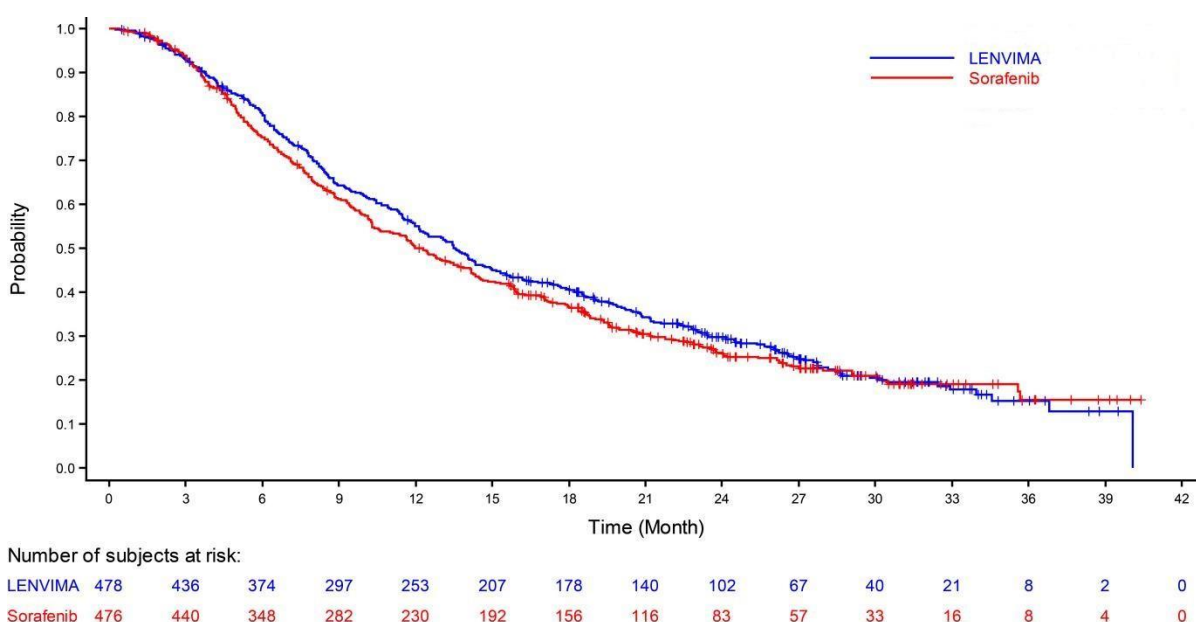
Table 17: Efficacy Results in Hepatocellular Carcinoma in REFLECT		
	LENVIMA N= 478	Sorafenib N=476
Overall Survival		
Number of deaths (%)	351 (73)	350 (74)
Median OS in months (95% CI)	13.6 (12.1, 14.9)	12.3 (10.4, 13.9)
Hazard Ratio (95% CI) ^a	0.92 (0.79, 1.06)	
Progression-Free Survival^b (mRECIST)		
Number of Events (%)	311 (65)	323 (68)
Median PFS in months (95% CI)	7.3 (5.6, 7.5)	3.6 (3.6, 3.7)
Hazard Ratio (95% CI)	0.64 (0.55, 0.75)	
P-value	<0.001	
Objective Response Rate^b (mRECIST)		
Objective response rate	41%	12%
Complete responses, n (%)	10 (2.1)	4 (0.8)
Partial responses, n (%)	184 (38.5)	55 (11.6)
95% CI	(36%, 45%)	(10%, 16%)
P-value	<0.001	
Progression-Free Survival^b (RECIST 1.1)		
Number of Events (%)	307 (64)	320 (67)
Median PFS in months (95% CI)	7.3 (5.6, 7.5)	3.6 (3.6, 3.9)
Hazard Ratio (95% CI)	0.65 (0.56, 0.77)	
Objective Response Rate^b (RECIST 1.1)		
Objective response rate	19%	7%
Complete responses, n (%)	2 (0.4)	1 (0.2)
Partial responses, n (%)	88 (18.4)	30 (6.3)
95% CI	(15%, 22%)	(4%, 9%)

CI = confidence interval; ECOG PS = Eastern Cooperative Oncology Group Performance Status; HR = hazard ratio; OS = overall survival.

a Based on stratified Cox-model. Non-inferiority margin for HR (lenvatinib vs sorafenib) is 1.08.

b Per independent radiology review.

Figure 6: Kaplan-Meier Curves for Overall Survival in REFLECT



14.4 Endometrial Carcinoma (EC)

The efficacy of LENVIMA in combination with pembrolizumab was investigated in Study 309 (NCT03517449), a multicenter, open-label, randomized, active-controlled trial that enrolled 827 patients with advanced endometrial carcinoma who had been previously treated with at least one prior platinum-based chemotherapy regimen in any setting, including in the neoadjuvant and adjuvant settings. Patients with endometrial sarcoma, including carcinosarcoma, or patients who had active autoimmune disease or a medical condition that required immunosuppression were ineligible. Patients with endometrial carcinoma that were pMMR (using the VENTANA MMR RxDx Panel test) or not MSI-H were stratified by ECOG performance status, geographic region, and history of pelvic radiation. Patients were randomized (1:1) to one of the following treatment arms:

- LENVIMA 20 mg orally once daily in combination with pembrolizumab 200 mg intravenously every 3 weeks.
- Investigator's choice consisting of either doxorubicin 60 mg/m² every 3 weeks, or paclitaxel 80 mg/m² given weekly, 3 weeks on/1 week off.

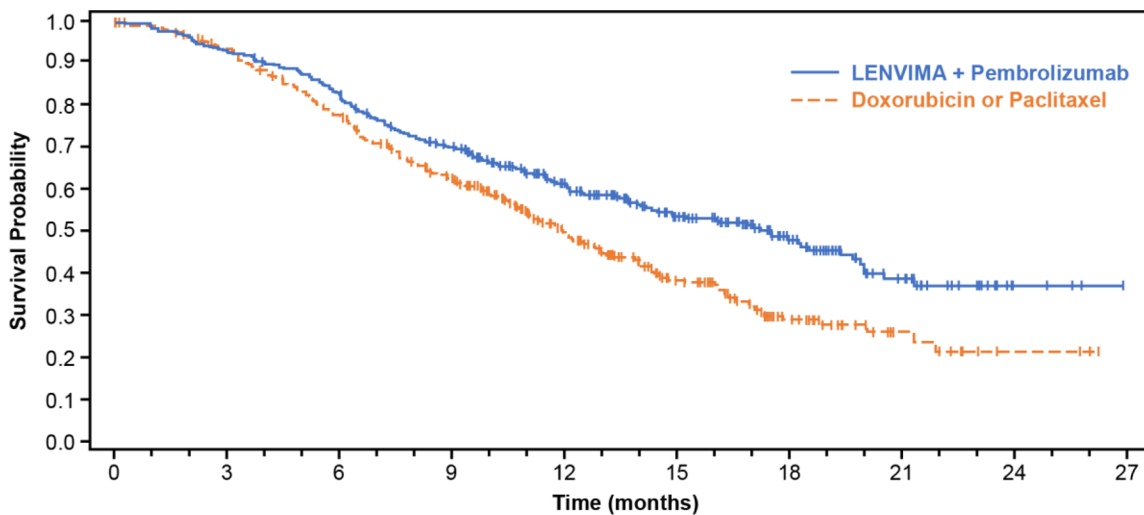
Treatment with LENVIMA and pembrolizumab continued until RECIST v1.1-defined progression of disease as verified by BICR, unacceptable toxicity, or for pembrolizumab, a maximum of 24 months. Treatment was permitted beyond RECIST v1.1-defined disease progression if the treating investigator considered the patient to be deriving clinical benefit and the treatment was tolerated. Assessment of tumor status was performed every 8 weeks. The major efficacy outcome measures were OS and PFS as assessed by BICR according to RECIST v1.1, modified to follow a maximum of 10 target lesions and a maximum of 5 target lesions per organ. Additional efficacy outcome measures included ORR and DOR, as assessed by BICR.

Among the 697 pMMR or not MSI-H patients, 346 patients were randomized to LENVIMA in combination with pembrolizumab, and 351 patients were randomized to investigator's choice of doxorubicin (n=254) or paclitaxel (n=97). The population characteristics of these patients were: median age of 65 years (range: 30 to 86), 52% age 65 or older; 62% White, 22% Asian, and 3% Black; 60% ECOG PS of 0 and 40% ECOG PS of 1. The histologic subtypes were endometrioid carcinoma (55%), serous (30%), clear cell carcinoma (7%), mixed (4%), and other (3%). All 697 of these patients received prior systemic therapy for endometrial carcinoma: 67% had one, 30% had two, and 3% had three or more prior systemic therapies. Thirty-seven percent of patients received only prior neoadjuvant or adjuvant therapy.

Efficacy results for these patients are summarized in Table 18 and Figures 7 and 8.

Table 18: Efficacy Results in Endometrial Carcinoma in Study 309		
	Endometrial Carcinoma (pMMR or not MSI-H)	
Endpoint	LENVIMA with pembrolizumab N=346	Doxorubicin or Paclitaxel N=351
OS		
Number (%) of patients with event	165 (48%)	203 (58%)
Median in months (95% CI)	17.4 (14.2, 19.9)	12.0 (10.8, 13.3)
Hazard ratio ^a (95% CI)	0.68 (0.56, 0.84)	
p-Value ^b	0.0001	
PFS^c		
Number (%) of patients with event	247 (71%)	238 (68%)
Median in months (95% CI)	6.6 (5.6, 7.4)	3.8 (3.6, 5.0)
Hazard ratio ^a (95% CI)	0.60 (0.50, 0.72)	
p-Value ^b	<0.0001	
Objective Response Rate		
ORR ^c (95% CI)	30% (26, 36)	15% (12,19)
Complete response	5%	3%
Partial response	25%	13%
p-Value ^d	<0.0001	
Duration of Response	N=105	N=53
Median in months (range)	9.2 (1.6+, 23.7+)	5.7 (0.0+, 24.2+)
^a	Based on the stratified Cox regression model	
^b	Based on stratified log-rank test	
^c	Per independent radiology review	
^d	Based on Miettinen and Nurminen method stratified by ECOG performance status, geographic region, and history of pelvic radiation	

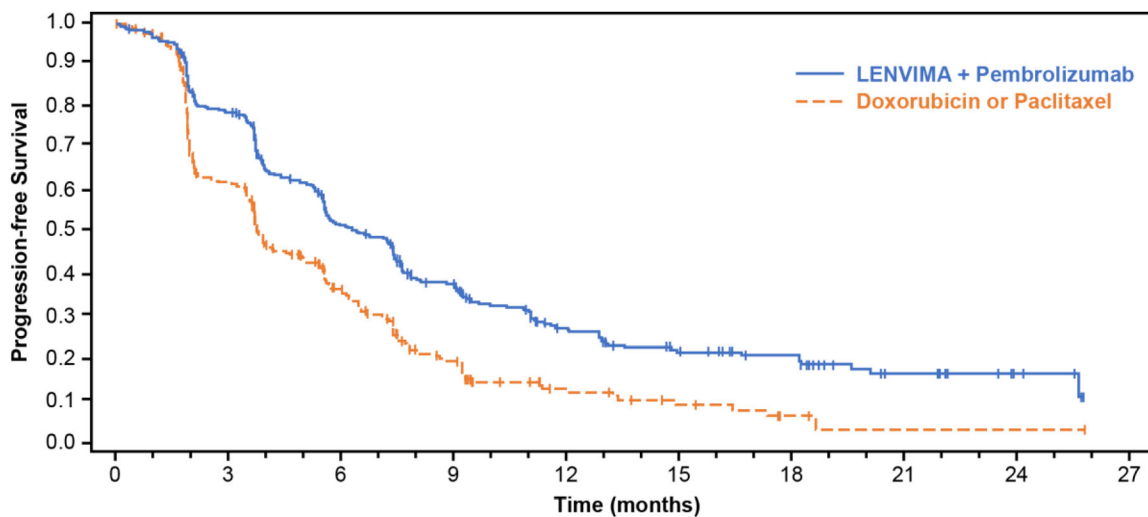
Figure 7: Kaplan-Meier Curves for Overall Survival in Study 309 (pMMR or not MSI-H)



Number of subjects at risk:

	0	3	6	9	12	15	18	21	24	27
LENVIMA + Pembrolizumab	346	322	285	232	160	109	62	28	5	0
Doxorubicin or Paclitaxel	351	319	262	201	120	70	33	11	3	0

Figure 8: Kaplan-Meier Curves for Progression-Free Survival in Study 309 (pMMR or not MSI-H)



Number of subjects at risk:

	0	3	6	9	12	15	18	21	24	27
LENVIMA + Pembrolizumab	346	264	165	112	60	39	30	12	5	0
Doxorubicin or Paclitaxel	351	177	83	37	15	8	3	1	1	0

16 HOW SUPPLIED/STORAGE AND HANDLING

LENVIMA 4 mg capsules are supplied as hard hypromellose capsules with yellowish-red body and yellowish-red cap, marked in black ink with “C” on the cap and “LENV 4 mg” on the body.

LENVIMA 10 mg capsules are supplied as hard hypromellose capsules with yellow body and yellowish-red cap, marked in black ink with “C” on the cap and “LENV 10 mg” on the body.

LENVIMA capsules are supplied in cartons of 6 cards. Each card is a 5-day blister card as follows:

- NDC 62856-724-30: 24 mg, carton with 6 cards NDC 62856-724-05 (ten 10 mg capsules and five 4 mg capsules per card).
- NDC 62856-720-30: 20 mg, carton with 6 cards NDC 62856-720-05 (ten 10 mg capsules per card).
- NDC 62856-718-30: 18 mg, carton with 6 cards NDC 62856-718-05 (five 10 mg capsules and ten 4 mg capsules per card).
- NDC 62856-714-30: 14 mg, carton with 6 cards NDC 62856-714-05 (five 10 mg capsules and five 4 mg capsules per card).
- NDC 62856-712-30: 12 mg, carton with 6 cards NDC 62856-712-05 (fifteen 4 mg capsules per card).
- NDC 62856-710-30: 10 mg, carton with 6 cards NDC 62856-710-05 (five 10 mg capsules per card).
- NDC 62856-708-30: 8 mg, carton with 6 cards NDC 62856-708-05 (ten 4 mg capsules per card).
- NDC 62856-704-30: 4 mg, carton with 6 cards NDC 62856-704-05 (five 4 mg capsules per card).

Store at 20°C to 25°C (68°F to 77°F); excursions permitted to 15°C to 30°C (59°F to 86°F) [see USP Controlled Room Temperature].

17 PATIENT COUNSELING INFORMATION

Advise the patient to read the FDA-approved patient labeling (Patient Information).

Hypertension

Advise patients to undergo regular blood pressure monitoring and to contact their health care provider if blood pressure is elevated [see *Warnings and Precautions (5.1)*].

Cardiac Dysfunction

Advise patients that LENVIMA can cause cardiac dysfunction and to immediately contact their healthcare provider if they experience any clinical symptoms of cardiac dysfunction [see *Warnings and Precautions (5.2)*].

Arterial Thrombotic Events

Advise patients to seek immediate medical attention for new onset chest pain or acute neurologic symptoms consistent with myocardial infarction or stroke [see *Warnings and Precautions (5.3)*].

Hepatotoxicity

Advise patients that they will need to undergo laboratory tests to monitor liver function and to report any new symptoms indicating hepatic toxicity or failure [see *Warnings and Precautions* (5.4)].

Proteinuria and Renal Failure/Impairment

Advise patients that they will need to undergo regular laboratory tests to monitor kidney function and protein in the urine [see *Warnings and Precautions* (5.5, 5.6)].

Diarrhea

Advise patients when to start standard anti-diarrheal therapy and to maintain adequate hydration. Advise patients to contact their healthcare provider if they are unable to maintain adequate hydration [see *Warnings and Precautions* (5.7)].

Fistula Formation and Gastrointestinal Perforation

Advise patients that LENVIMA can increase the risk of fistula formation or gastrointestinal perforation and to seek immediate medical attention for severe abdominal pain [see *Warnings and Precautions* (5.8)].

QTc Interval Prolongation

Advise patients who are at risk for QTc prolongation that they will need to undergo regular ECGs. Advise all patients that they will need to undergo laboratory tests to monitor electrolytes [see *Warnings and Precautions* (5.9)].

Hypocalcemia

Advise patients of the risks of hypocalcemia, that they will need to undergo laboratory tests to monitor calcium levels, and the potential requirement for calcium supplementation [see *Warnings and Precautions* (5.10)].

Reversible Posterior Leukoencephalopathy Syndrome (RPLS)

Advise patients of the signs and symptoms of RPLS and to contact their healthcare provider for new onset or worsening neurological function [see *Warnings and Precautions* (5.11)].

Hemorrhagic Events

Advise patients that LENVIMA can increase the risk for bleeding and to contact their healthcare provider for bleeding or symptoms of severe bleeding [see *Warnings and Precautions* (5.12)].

Impairment of Thyroid Stimulating Hormone Suppression/Thyroid Dysfunction

Advise patients that LENVIMA can cause hypothyroidism and that their thyroid function should be monitored regularly during treatment [see *Warnings and Precautions* (5.13)].

Impaired Wound Healing

Advise patients that LENVIMA may impair wound healing. Advise patients to inform their healthcare provider of any planned surgical procedure [see *Warnings and Precautions* (5.14)].

Osteonecrosis of the Jaw (ONJ)

Advise patients regarding good oral hygiene practices and to have preventive dentistry performed prior to treatment with LENVIMA and throughout treatment with LENVIMA.

Inform patients being treated with LENVIMA, particularly those who are at high risk for ONJ, to avoid invasive dental procedures, if possible, and to inform their healthcare provider of any planned dental procedures [see *Warnings and Precautions (5.15)*]. Advise patients to immediately contact their healthcare provider for signs or symptoms associated with ONJ.

Embryo-Fetal Toxicity

Advise females of reproductive potential of the potential risk to a fetus and to inform their healthcare provider of a known or suspected pregnancy [see *Warnings and Precautions (5.16)*, *Use in Specific Populations (8.1)*].

Advise females of reproductive potential to use effective contraception during treatment with LENVIMA and for 30 days after the last dose [see *Use in Specific Populations (8.3)*].

Lactation

Advise women to discontinue breastfeeding during treatment with LENVIMA and for 1 week after the last dose [see *Use in Specific Populations (8.2)*].

Distributed by:
Eisai Inc.
Nutley, NJ 07110

LENVIMA® is a registered trademark of Eisai R&D Management Co., Ltd. and is licensed to Eisai Inc.

© 2015-2022 Eisai Inc.

PATIENT INFORMATION
LENVIMA® (lehn-veema)
(lenvatinib)
capsules

What is LENVIMA?

LENVIMA is a prescription medicine that is used to treat people with certain kinds of cancer.

- LENVIMA is used by itself to treat differentiated thyroid cancer (DTC), a type of thyroid cancer that can no longer be treated with radioactive iodine and is progressing.
- LENVIMA is used to treat adults with a type of kidney cancer called advanced renal cell carcinoma (RCC):
 - along with the medicine pembrolizumab as your first treatment when your kidney cancer has spread or cannot be removed by surgery.
 - along with the medicine everolimus after one course of treatment with another anti-cancer medicine.
- LENVIMA is used by itself as the first treatment for a type of liver cancer called hepatocellular carcinoma (HCC) when it cannot be removed by surgery.
- LENVIMA is used along with another medicine called pembrolizumab to treat advanced endometrial carcinoma (EC), a type of uterine cancer:
 - when a laboratory test shows that your tumor is mismatch repair proficient (pMMR) or not microsatellite instability-high (MSI-H), **and**
 - you have received anti-cancer treatment, and it is no longer working, **and**
 - your cancer cannot be cured by surgery or radiation.

It is not known if LENVIMA is safe and effective in children.

Before you take LENVIMA, tell your healthcare provider about all of your medical conditions, including if you:

- have high blood pressure
- have heart problems
- have a history of blood clots in your arteries (type of blood vessel), including stroke, heart attack, or change in vision
- have or have had liver or kidney problems
- have a history of a tear (perforation) in your stomach or intestine, or an abnormal connection between two or more body parts (fistula)
- have headaches, seizures, or vision problems
- have any bleeding problems
- plan to have surgery, a dental procedure, or have had a recent surgery. You should stop taking LENVIMA at least 1 week before planned surgery. See **“What are the possible side effects of LENVIMA?”**
- are pregnant or plan to become pregnant. LENVIMA can harm your unborn baby.

Females who are able to become pregnant:

- Your healthcare provider should do a pregnancy test before you start treatment with LENVIMA.
- You should use an effective method of birth control during treatment with LENVIMA and for 30 days after the last dose of LENVIMA. Talk with your healthcare provider about birth control methods you can use during this time. Tell your healthcare provider right away if you become pregnant or think you are pregnant during treatment with LENVIMA.
- are breastfeeding or plan to breastfeed. It is not known if LENVIMA passes into your breast milk. Do not breastfeed during treatment with LENVIMA and for 1 week after the last dose.

Tell your healthcare provider about all the medicines you take, including prescription and over-the-counter medicines, vitamins, and herbal supplements.

Especially tell your healthcare provider if you are taking, or have taken, an osteoporosis medicine.

Know the medicines you take. Keep a list of your medicines to show to your healthcare provider and pharmacist when you get a new medicine.

How should I take LENVIMA?

- Take LENVIMA exactly as your healthcare provider tells you to take it.
- Your healthcare provider will tell you how much LENVIMA to take and when to take it. Your healthcare provider may change your dose during treatment, stop treatment for some time, or completely stop treatment with LENVIMA if you have side effects.
- Take LENVIMA 1 time each day at the same time, with or without food.
- If you miss a dose of LENVIMA, take it as soon as you remember. If your next dose is due within 12 hours, skip the missed dose and take the next dose at your regular time.
- Swallow LENVIMA capsules whole. Do not crush or chew the LENVIMA capsules.
- If you cannot swallow LENVIMA capsules whole, LENVIMA capsules can be mixed with water or apple juice, then taken by mouth, or mixed with water and given through a feeding tube.

How to take LENVIMA by mouth if you cannot swallow whole capsules:

- Place your daily dose, up to 5 capsules, in a small container or oral syringe (approximately 20 mL capacity).
- Add 3 mL of **water or apple juice** to the container or oral syringe. **Wait 10 minutes** for the capsule shell (outer surface) to dissolve completely, then stir or shake the mixture for 3 minutes until capsules are fully dissolved. Do not break or crush the capsules.
- Drink the liquid mixture or use an oral syringe to take directly into the mouth.
- Next, using a second syringe, add an additional 2 mL of liquid to the container or oral syringe (cap the first oral syringe before adding the additional water) then swirl or shake and take the liquid mixture. Repeat this step at least one time and until you cannot see any of the LENVIMA mixture left in the container or oral syringe to make sure all of the medicine is taken.
- If 6 capsules are required for your daily dose, follow the above instructions using 3 capsules at a time.

How to give LENVIMA through a feeding tube:

- LENVIMA should be given in feeding tubes of at least 5 French diameter (polyvinyl chloride or polyurethane tube) and at least 6 French diameter (silicone tube).
 - Place your daily dose, up to 5 capsules, in a syringe (20 mL capacity).
 - Add 3 mL of **water** to the syringe. **Wait 10 minutes** for the capsule shell (outer surface) to dissolve completely, then stir or shake the mixture for 3 minutes until capsules are fully dissolved. Do not break or crush the capsules.
 - Give the mixture through a feeding tube.
 - Next, cap the syringe and remove the plunger. Use a second syringe and add an additional 2 mL of liquid to the syringe. Swirl or shake and give the mixture in the feeding tube. Repeat this step at least one time and until you cannot see any of the LENVIMA mixture left in the syringe to make sure all of the medicine is taken.
 - If 6 capsules are required for your daily dose, follow the above instructions using 3 capsules at a time.
- LENVIMA mixture may be stored in a covered container in the refrigerator at 36°F to 46°F (2°C to 8°C) for a maximum of 24 hours. Throw away the LENVIMA mixture if not used within 24 hours of mixing.
- If you take too much LENVIMA, call your healthcare provider or go to the nearest hospital emergency room right away.

What are the possible side effects of LENVIMA?

LENVIMA may cause serious side effects, including:

- **High blood pressure (hypertension).** High blood pressure is a common side effect of LENVIMA and can be serious. Your blood pressure should be well controlled before you start taking LENVIMA. Your healthcare provider should check your blood pressure regularly during treatment with LENVIMA. If you develop blood pressure problems, your healthcare provider may prescribe medicine to treat your high blood pressure.
- **Heart problems.** LENVIMA can cause serious heart problems that may lead to death. Call your healthcare provider right away if you get symptoms of heart problems, such as shortness of breath or swelling of your ankles.
- **Problem with blood clots in your blood vessels (arteries).** Get emergency medical help right away if you get any of the following symptoms:

- severe chest pain or pressure
- pain in your arms, back, neck or jaw
- shortness of breath
- numbness or weakness on one side of your body
- trouble talking
- sudden severe headache
- sudden vision changes

- **Liver problems.** LENVIMA may cause liver problems that may lead to liver failure and death. Your healthcare provider will check your liver function before and during treatment with LENVIMA. Tell your healthcare provider right away if you have any of the following symptoms:
 - your skin or the white part of your eyes turns yellow (jaundice)
 - dark “tea colored” urine
 - light-colored bowel movements (stools)
 - feeling drowsy, confused or loss of consciousness
- **Kidney problems.** Kidney failure, which can lead to death, has happened with LENVIMA treatment. Your healthcare provider should do regular blood tests to check your kidneys.
- **Increased protein in your urine (proteinuria).** Proteinuria is a common side effect of LENVIMA and can be serious. Your healthcare provider should check your urine for protein before and during your treatment with LENVIMA.
- **Diarrhea.** Diarrhea is a common side effect of LENVIMA and can be serious. If you get diarrhea, ask your healthcare provider about what medicines you can take to treat your diarrhea. It is important to drink more water when you get diarrhea. Tell your healthcare provider or go to the emergency room if you are unable to drink enough liquids and your diarrhea is not able to be controlled.
- **An opening in the wall of your stomach or intestines (perforation) or an abnormal connection between two or more body parts (fistula).** Get emergency medical help right away if you have severe stomach (abdomen) pain.
- **Changes in the electrical activity of your heart called QT prolongation.** QT prolongation can cause irregular heartbeats that can be life threatening. Your healthcare provider will do blood tests before and during your treatment with LENVIMA to check the levels of potassium, magnesium, and calcium in your blood, and may check the electrical activity of your heart with an ECG.
- **Low levels of blood calcium (hypocalcemia).** Your healthcare provider will check your blood calcium levels during treatment with LENVIMA and may tell you to take a calcium supplement if your calcium levels are low.
- **A condition called Reversible Posterior Leukoencephalopathy Syndrome (RPLS).** Call your healthcare provider right away if you get severe headache, seizures, weakness, confusion, or blindness or change in vision.
- **Bleeding.** LENVIMA may cause serious bleeding problems that may lead to death. Tell your healthcare provider if you have any signs or symptoms of bleeding during treatment with LENVIMA, including:
 - severe and persistent nose bleeds
 - vomiting blood
 - red or black (looks like tar) stools
 - blood in your urine
 - coughing up blood or blood clots
 - heavy or new onset vaginal bleeding
- **Change in thyroid hormone levels.** Your healthcare provider should check your thyroid hormone levels before starting and every month during treatment with LENVIMA.
- **Wound healing problems.** Wound healing problems have happened in some people who take LENVIMA. Tell your healthcare provider if you plan to have any surgery before or during treatment with LENVIMA.
 - You should stop taking LENVIMA at least 1 week before planned surgery.
 - Your healthcare provider should tell you when you may start taking LENVIMA again after surgery.
- **Severe jawbone problems (osteonecrosis).** Severe jawbone problems have happened in some people who take LENVIMA. Certain risk factors such as taking a bisphosphonate medicine or the medicine denosumab, having dental disease, or an invasive dental procedure may increase your risk of getting jawbone problems. Your healthcare provider should examine your mouth before you start and during treatment with LENVIMA. Tell your dentist that you are taking LENVIMA. It is important for you to practice good mouth care during treatment with LENVIMA. Tell your healthcare provider right away if you get signs or symptoms of jawbone problems during treatment with LENVIMA, including jaw pain, toothache, or sores on your gums. Tell your healthcare provider if you plan to have any dental procedures before or during treatment with LENVIMA. You should avoid having

invasive dental procedures if possible, during treatment with LENVIMA. Stopping your bisphosphonate medicine before an invasive dental procedure may help decrease your risk of getting these jaw problems.

- You should stop taking LENVIMA at least 1 week before planned dental surgery or invasive dental procedures.
- Your healthcare provider should tell you when you may start taking LENVIMA again after dental procedures.

The most common side effects of LENVIMA in people treated for thyroid cancer include:

- tiredness
- joint and muscle pain
- decreased appetite
- weight loss
- nausea
- mouth sores
- headache
- vomiting
- rash, redness, itching, or peeling of your skin on your hands and feet
- stomach (abdomen) pain
- hoarseness

The most common side effects of LENVIMA when given with everolimus include:

- tiredness
- joint and muscle pain
- decreased appetite
- vomiting
- nausea
- mouth sores
- swelling in your arms and legs
- cough
- stomach (abdomen) pain
- trouble breathing
- rash
- weight loss
- bleeding

The most common side effects of LENVIMA in people treated for liver cancer include:

- tiredness
- decreased appetite
- joint and muscle pain
- weight loss
- stomach (abdomen) pain
- rash, redness, itching, or peeling of your skin on your hands and feet
- hoarseness
- bleeding
- change in thyroid hormone levels
- nausea

The most common side effects of LENVIMA when given with pembrolizumab include:

- decrease in thyroid hormone levels
- increased blood pressure
- tiredness
- diarrhea
- joint and muscle pain
- nausea
- decreased appetite
- vomiting
- mouth sores
- weight loss
- stomach-area (abdomen) pain
- urinary tract infection
- protein in your urine
- constipation
- headache
- bleeding
- rash, redness, itching, or peeling of your skin on your hands and feet
- hoarseness
- rash

LENVIMA may cause fertility problems in males and females. Talk to your healthcare provider if this is a concern for you.

Your healthcare provider may need to reduce your dose of LENVIMA, or delay or completely stop treatment, if you have certain side effects.

These are not all the possible side effects of LENVIMA.

Call your doctor for medical advice about side effects. You may report side effects to FDA at 1-800-FDA-1088.

How should I store LENVIMA?

- Store LENVIMA at room temperature, between 68°F to 77°F (20°C to 25°C).
- **Keep LENVIMA and all medicines out of the reach of children.**

General information about the safe and effective use of LENVIMA.

Medicines are sometimes prescribed for purposes other than those listed in a Patient Information leaflet. Do not use LENVIMA for a condition for which it was not prescribed. Do not give LENVIMA to other people, even if they have the same symptoms you have. It may harm them. You can ask your healthcare provider or pharmacist for information about LENVIMA that is written for health professionals.

What are the ingredients in LENVIMA?

Active ingredient: lenvatinib

Inactive ingredients: calcium carbonate, hydroxypropyl cellulose, low-substituted hydroxypropylcellulose, mannitol, microcrystalline cellulose, and talc.

The capsule shell contains: hypromellose, titanium dioxide, ferric oxide yellow, and ferric oxide red. The printing ink contains black iron oxide, potassium hydroxide, propylene glycol and shellac.

Distributed by: Eisai Inc., Nutley, NJ 07110

LENVIMA® is a registered trademark of Eisai R&D Management Co., Ltd. and is licensed to Eisai Inc.

For more information, call 1-877-873-4724 or go to www.LENVIMA.com.

© 2015-2022 Eisai Inc.

This Patient Information has been approved by the U.S. Food and Drug Administration.

Revised: 11/2022